



wwPDB EM Validation Summary Report ⓘ

Apr 28, 2024 – 04:00 am BST

PDB ID : 5A9K
EMDB ID : EMD-3087
Title : Structural basis for DNA strand separation by a hexameric replicative helicase
Authors : Chaban, Y.; Stead, J.A.; Ryzhenkova, K.; Whelan, F.; Lamber, K.; Antson, F.; Sanders, C.M.; Orlova, E.V.
Deposited on : 2015-07-21
Resolution : 19.00 Å(reported)
Based on initial model : 2V9P

This is a wwPDB EM Validation Summary Report for a publicly released PDB entry.

We welcome your comments at validation@mail.wwpdb.org

A user guide is available at

<https://www.wwpdb.org/validation/2017/EMValidationReportHelp>
with specific help available everywhere you see the ⓘ symbol.

The types of validation reports are described at

<http://www.wwpdb.org/validation/2017/FAQs#types>.

The following versions of software and data (see [references ⓘ](#)) were used in the production of this report:

EMDB validation analysis : 0.0.1.dev92
Mogul : 1.8.4, CSD as541be (2020)
MolProbity : 4.02b-467
Percentile statistics : 20191225.v01 (using entries in the PDB archive December 25th 2019)
MapQ : 1.9.13
Ideal geometry (proteins) : Engh & Huber (2001)
Ideal geometry (DNA, RNA) : Parkinson et al. (1996)
Validation Pipeline (wwPDB-VP) : 2.36.2

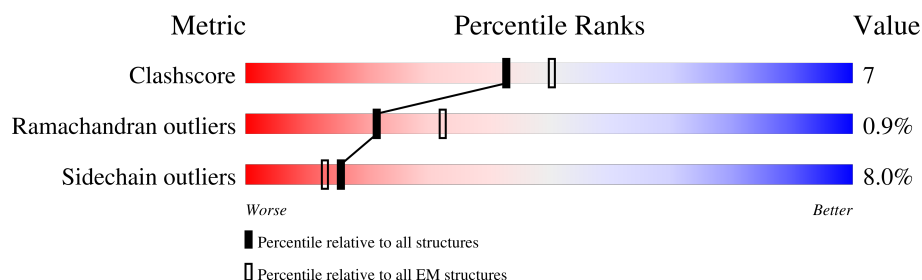
1 Overall quality at a glance

The following experimental techniques were used to determine the structure:

ELECTRON MICROSCOPY

The reported resolution of this entry is 19.00 Å.

Percentile scores (ranging between 0-100) for global validation metrics of the entry are shown in the following graphic. The table shows the number of entries on which the scores are based.



Metric	Whole archive (#Entries)	EM structures (#Entries)
Clashscore	158937	4297
Ramachandran outliers	154571	4023
Sidechain outliers	154315	3826

The table below summarises the geometric issues observed across the polymeric chains and their fit to the map. The red, orange, yellow and green segments of the bar indicate the fraction of residues that contain outliers for ≥ 3 , 2, 1 and 0 types of geometric quality criteria respectively. A grey segment represents the fraction of residues that are not modelled. The numeric value for each fraction is indicated below the corresponding segment, with a dot representing fractions $\leq 5\%$. The upper red bar (where present) indicates the fraction of residues that have poor fit to the EM map (all-atom inclusion $< 40\%$). The numeric value is given above the bar.

Mol	Chain	Length	Quality of chain
1	A	305	<div> <div>26%</div> <div>69%</div> <div>19%</div> <div>•</div> <div>11%</div> </div>
1	B	305	<div> <div>25%</div> <div>71%</div> <div>14%</div> <div>•</div> <div>12%</div> </div>
1	C	305	<div> <div>27%</div> <div>70%</div> <div>16%</div> <div>•</div> <div>12%</div> </div>
1	D	305	<div> <div>28%</div> <div>73%</div> <div>14%</div> <div>•</div> <div>10%</div> </div>
1	E	305	<div> <div>23%</div> <div>68%</div> <div>20%</div> <div>•</div> <div>11%</div> </div>
1	F	305	<div> <div>21%</div> <div>64%</div> <div>22%</div> <div>••</div> <div>12%</div> </div>

The following table lists non-polymeric compounds, carbohydrate monomers and non-standard residues in protein, DNA, RNA chains that are outliers for geometric or electron-density-fit criteria:

Mol	Type	Chain	Res	Chirality	Geometry	Clashes	Electron density
2	PO4	A	1580	-	-	X	-
2	PO4	C	1579	-	X	-	-

2 Entry composition [i](#)

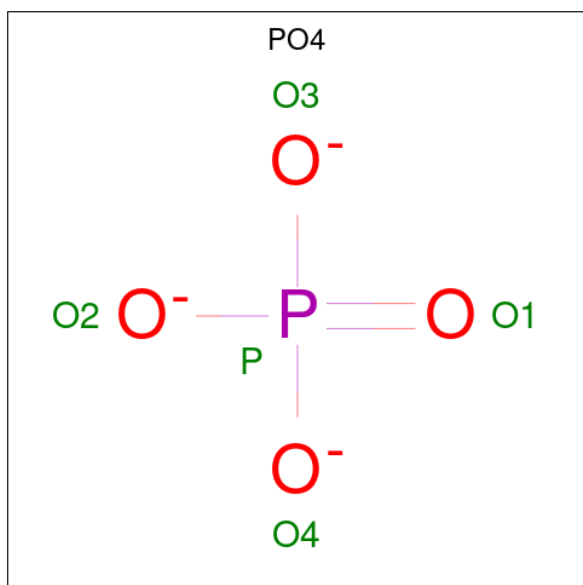
There are 4 unique types of molecules in this entry. The entry contains 13059 atoms, of which 0 are hydrogens and 0 are deuteriums.

In the tables below, the AltConf column contains the number of residues with at least one atom in alternate conformation and the Trace column contains the number of residues modelled with at most 2 atoms.

- Molecule 1 is a protein called REPLICATION PROTEIN E1.

Mol	Chain	Residues	Atoms					AltConf	Trace
1	A	272	Total	C	N	O	S	0	0
			2183	1404	375	394	10		
1	B	268	Total	C	N	O	S	0	0
			2149	1386	370	383	10		
1	C	267	Total	C	N	O	S	0	0
			2142	1382	369	381	10		
1	D	274	Total	C	N	O	S	0	0
			2191	1409	377	395	10		
1	E	270	Total	C	N	O	S	0	0
			2170	1398	373	389	10		
1	F	269	Total	C	N	O	S	0	0
			2158	1392	372	384	10		

- Molecule 2 is PHOSPHATE ION (three-letter code: PO4) (formula: O₄P).



Mol	Chain	Residues	Atoms			AltConf
2	A	1	Total	O	P	0
			5	4	1	

Continued on next page...

Continued from previous page...

Mol	Chain	Residues	Atoms			AltConf
2	A	1	Total	O	P	0
			5	4	1	
2	B	1	Total	O	P	0
			5	4	1	
2	B	1	Total	O	P	0
			5	4	1	
2	C	1	Total	O	P	0
			5	4	1	
2	C	1	Total	O	P	0
			5	4	1	
2	D	1	Total	O	P	0
			5	4	1	
2	E	1	Total	O	P	0
			5	4	1	
2	F	1	Total	O	P	0
			5	4	1	

- Molecule 3 is MAGNESIUM ION (three-letter code: MG) (formula: Mg).

Mol	Chain	Residues	Atoms		AltConf
3	A	1	Total	Mg	0
			1	1	
3	B	1	Total	Mg	0
			1	1	
3	C	1	Total	Mg	0
			1	1	

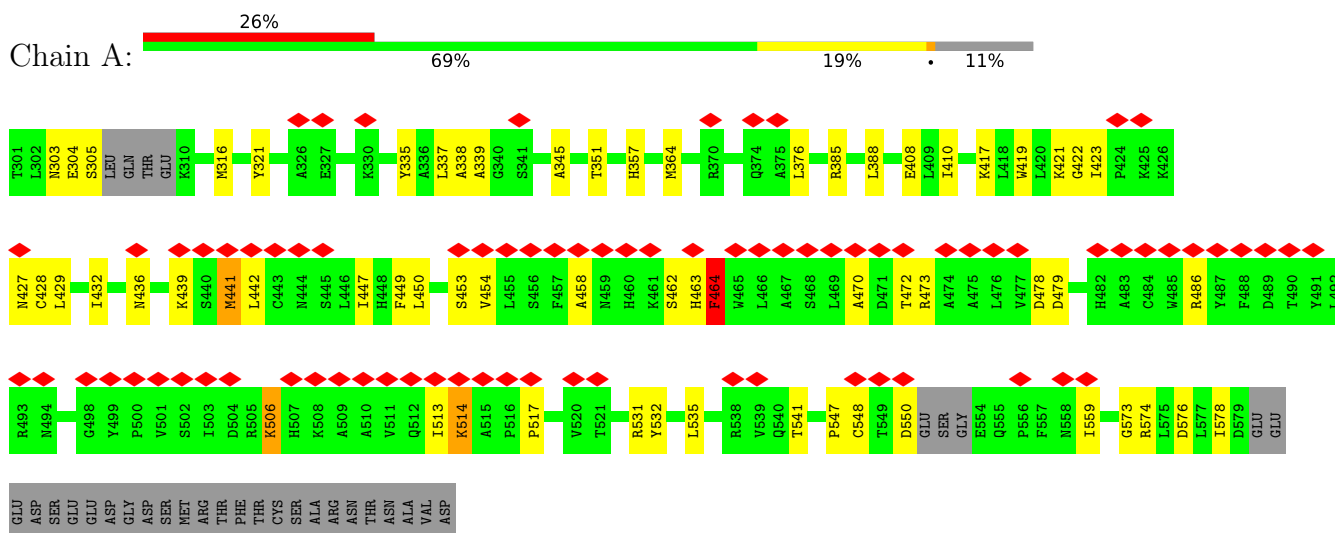
- Molecule 4 is water.

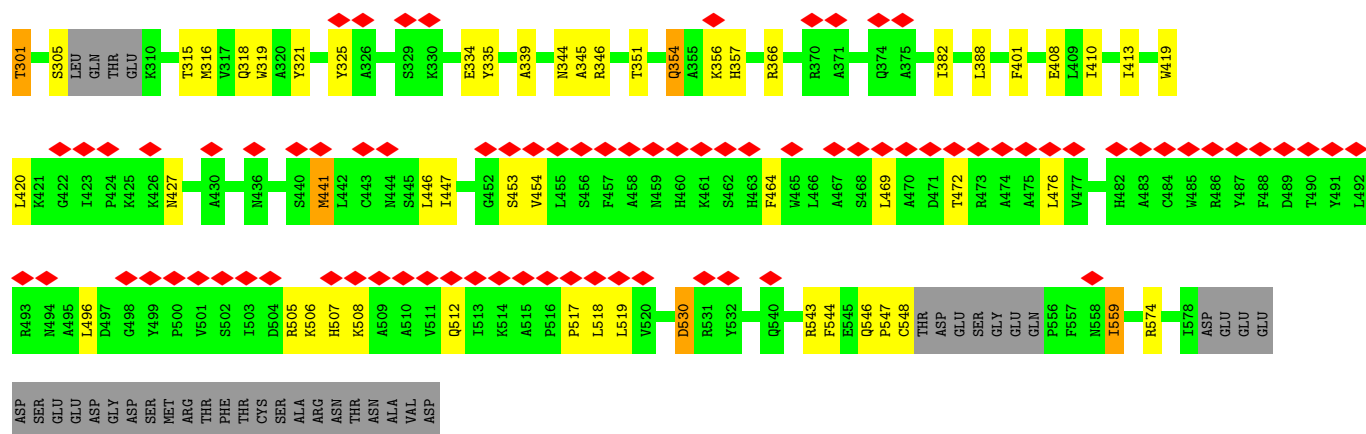
Mol	Chain	Residues	Atoms		AltConf
4	A	3	Total	O	0
			3	3	
4	B	3	Total	O	0
			3	3	
4	C	3	Total	O	0
			3	3	
4	D	4	Total	O	0
			4	4	
4	E	2	Total	O	0
			2	2	
4	F	3	Total	O	0
			3	3	

3 Residue-property plots

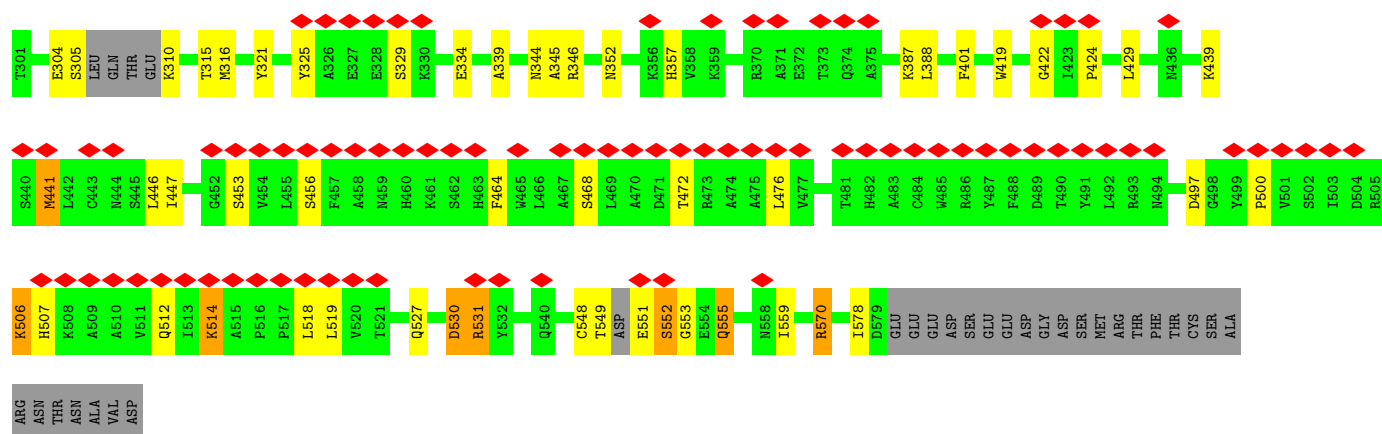
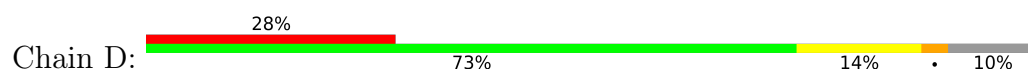
These plots are drawn for all protein, RNA, DNA and oligosaccharide chains in the entry. The first graphic for a chain summarises the proportions of the various outlier classes displayed in the second graphic. The second graphic shows the sequence view annotated by issues in geometry and atom inclusion in map density. Residues are color-coded according to the number of geometric quality criteria for which they contain at least one outlier: green = 0, yellow = 1, orange = 2 and red = 3 or more. A red diamond above a residue indicates a poor fit to the EM map for this residue (all-atom inclusion < 40%). Stretches of 2 or more consecutive residues without any outlier are shown as a green connector. Residues present in the sample, but not in the model, are shown in grey.

• Molecule 1: REPLICATION PROTEIN E1

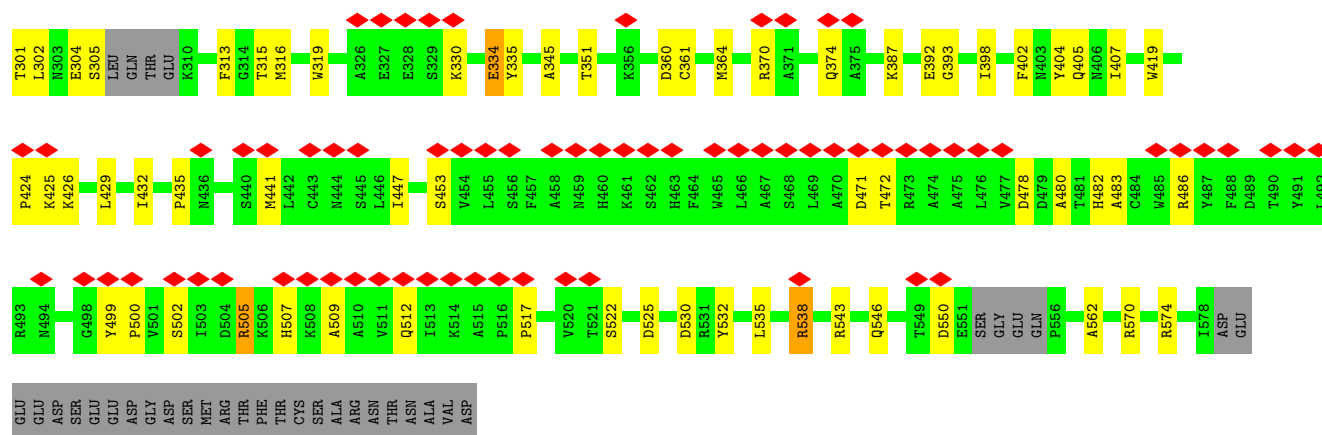




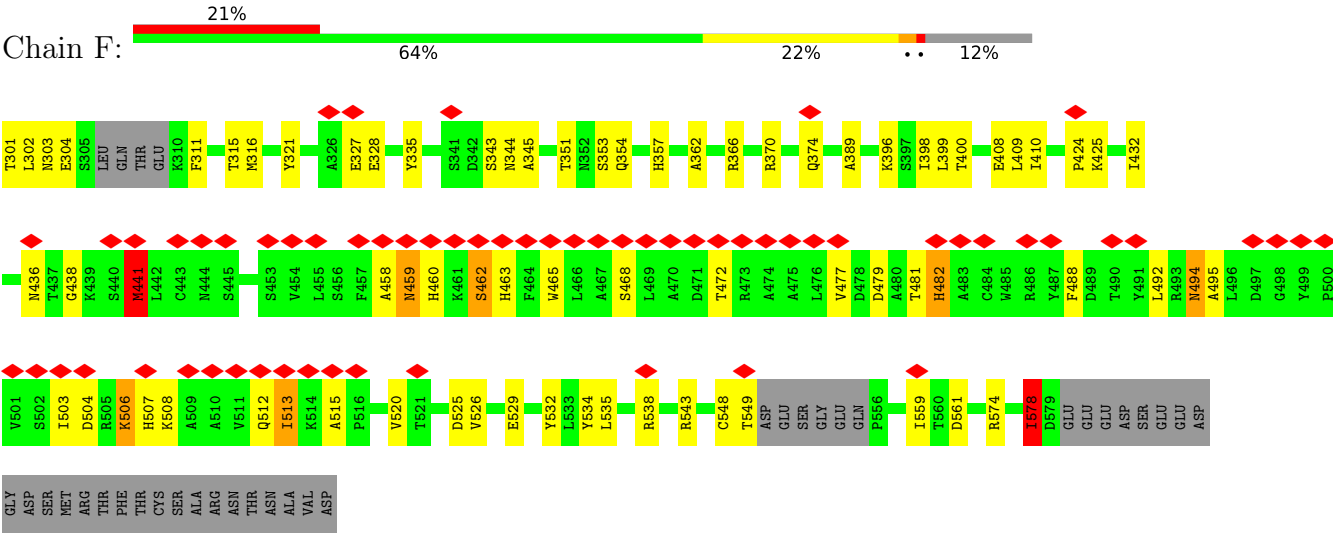
• Molecule 1: REPLICATION PROTEIN E1



• Molecule 1: REPLICATION PROTEIN E1



• Molecule 1: REPLICATION PROTEIN E1



4 Experimental information

Property	Value	Source
EM reconstruction method	SINGLE PARTICLE	Depositor
Imposed symmetry	POINT, C6	Depositor
Number of particles used	8265	Depositor
Resolution determination method	Not provided	
CTF correction method	FRAMES	Depositor
Microscope	FEI TECNAI F20	Depositor
Voltage (kV)	200	Depositor
Electron dose ($e^-/\text{\AA}^2$)	20	Depositor
Minimum defocus (nm)	500	Depositor
Maximum defocus (nm)	1500	Depositor
Magnification	67000	Depositor
Image detector	GATAN ULTRASCAN 4000 (4k x 4k)	Depositor
Maximum map value	0.431	Depositor
Minimum map value	-0.168	Depositor
Average map value	0.001	Depositor
Map value standard deviation	0.013	Depositor
Recommended contour level	0.011	Depositor
Map size (\AA)	320.0, 320.0, 320.0	wwPDB
Map dimensions	200, 200, 200	wwPDB
Map angles ($^\circ$)	90.0, 90.0, 90.0	wwPDB
Pixel spacing (\AA)	1.6, 1.6, 1.6	Depositor

5 Model quality [i](#)

5.1 Standard geometry [i](#)

Bond lengths and bond angles in the following residue types are not validated in this section: PO4, MG

The Z score for a bond length (or angle) is the number of standard deviations the observed value is removed from the expected value. A bond length (or angle) with $|Z| > 5$ is considered an outlier worth inspection. RMSZ is the root-mean-square of all Z scores of the bond lengths (or angles).

Mol	Chain	Bond lengths		Bond angles	
		RMSZ	$\# Z > 5$	RMSZ	$\# Z > 5$
1	A	0.48	0/2240	0.59	0/3037
1	B	0.50	1/2206 (0.0%)	0.62	2/2990 (0.1%)
1	C	0.49	0/2199	0.61	0/2980
1	D	0.47	0/2248	0.64	4/3047 (0.1%)
1	E	0.48	0/2227	0.59	0/3017
1	F	0.49	0/2215	0.62	0/3001
All	All	0.48	1/13335 (0.0%)	0.61	6/18072 (0.0%)

All (1) bond length outliers are listed below:

Mol	Chain	Res	Type	Atoms	Z	Observed(Å)	Ideal(Å)
1	B	327	GLU	CD-OE1	5.96	1.32	1.25

The worst 5 of 6 bond angle outliers are listed below:

Mol	Chain	Res	Type	Atoms	Z	Observed(°)	Ideal(°)
1	B	486	ARG	NE-CZ-NH2	-7.44	116.58	120.30
1	B	486	ARG	NE-CZ-NH1	6.21	123.40	120.30
1	D	531	ARG	NE-CZ-NH2	-6.18	117.21	120.30
1	D	570	ARG	NE-CZ-NH1	5.91	123.25	120.30
1	D	531	ARG	NE-CZ-NH1	5.74	123.17	120.30

There are no chirality outliers.

There are no planarity outliers.

5.2 Too-close contacts [i](#)

In the following table, the Non-H and H(model) columns list the number of non-hydrogen atoms and hydrogen atoms in the chain respectively. The H(added) column lists the number of hydrogen

atoms added and optimized by MolProbity. The Clashes column lists the number of clashes within the asymmetric unit, whereas Symm-Clashes lists symmetry-related clashes.

Mol	Chain	Non-H	H(model)	H(added)	Clashes	Symm-Clashes
1	A	2183	0	2132	40	0
1	B	2149	0	2110	28	0
1	C	2142	0	2103	28	0
1	D	2191	0	2140	32	0
1	E	2170	0	2132	43	0
1	F	2158	0	2124	35	0
2	A	10	0	0	2	0
2	B	10	0	0	1	0
2	C	10	0	0	0	0
2	D	5	0	0	1	0
2	E	5	0	0	0	0
2	F	5	0	0	0	0
3	A	1	0	0	0	0
3	B	1	0	0	0	0
3	C	1	0	0	0	0
4	A	3	0	0	0	0
4	B	3	0	0	0	0
4	C	3	0	0	0	0
4	D	4	0	0	0	0
4	E	2	0	0	0	0
4	F	3	0	0	0	0
All	All	13059	0	12741	183	0

The all-atom clashscore is defined as the number of clashes found per 1000 atoms (including hydrogen atoms). The all-atom clashscore for this structure is 7.

The worst 5 of 183 close contacts within the same asymmetric unit are listed below, sorted by their clash magnitude.

Atom-1	Atom-2	Interatomic distance (Å)	Clash overlap (Å)
1:D:304:GLU:HG2	1:D:305:SER:H	1.18	1.06
1:E:453:SER:HB2	1:F:512:GLN:HE22	1.32	0.94
1:A:441:MET:HE1	1:A:559:ILE:H	1.32	0.92
1:A:304:GLU:HG2	1:A:305:SER:H	1.41	0.83
2:A:1580:PO4:O1	2:A:1581:PO4:O2	1.97	0.82

There are no symmetry-related clashes.

5.3 Torsion angles

5.3.1 Protein backbone

In the following table, the Percentiles column shows the percent Ramachandran outliers of the chain as a percentile score with respect to all PDB entries followed by that with respect to all EM entries.

The Analysed column shows the number of residues for which the backbone conformation was analysed, and the total number of residues.

Mol	Chain	Analysed	Favoured	Allowed	Outliers	Percentiles	
1	A	266/305 (87%)	244 (92%)	20 (8%)	2 (1%)	19	60
1	B	262/305 (86%)	251 (96%)	10 (4%)	1 (0%)	34	72
1	C	261/305 (86%)	252 (97%)	9 (3%)	0	100	100
1	D	268/305 (88%)	256 (96%)	8 (3%)	4 (2%)	10	46
1	E	264/305 (87%)	246 (93%)	18 (7%)	0	100	100
1	F	263/305 (86%)	239 (91%)	17 (6%)	7 (3%)	5	31
All	All	1584/1830 (87%)	1488 (94%)	82 (5%)	14 (1%)	21	57

5 of 14 Ramachandran outliers are listed below:

Mol	Chain	Res	Type
1	D	506	LYS
1	D	553	GLY
1	F	479	ASP
1	F	506	LYS
1	B	576	ASP

5.3.2 Protein sidechains

In the following table, the Percentiles column shows the percent sidechain outliers of the chain as a percentile score with respect to all PDB entries followed by that with respect to all EM entries.

The Analysed column shows the number of residues for which the sidechain conformation was analysed, and the total number of residues.

Mol	Chain	Analysed	Rotameric	Outliers	Percentiles	
1	A	229/259 (88%)	210 (92%)	19 (8%)	11	34
1	B	225/259 (87%)	208 (92%)	17 (8%)	13	37
1	C	224/259 (86%)	207 (92%)	17 (8%)	13	37

Continued on next page...

Continued from previous page...

Mol	Chain	Analysed	Rotameric	Outliers	Percentiles	
1	D	229/259 (88%)	215 (94%)	14 (6%)	18	44
1	E	228/259 (88%)	212 (93%)	16 (7%)	15	40
1	F	226/259 (87%)	200 (88%)	26 (12%)	5	21
All	All	1361/1554 (88%)	1252 (92%)	109 (8%)	16	35

5 of 109 residues with a non-rotameric sidechain are listed below:

Mol	Chain	Res	Type
1	D	441	MET
1	E	387	LYS
1	F	507	HIS
1	D	514	LYS
1	D	555	GLN

Sometimes sidechains can be flipped to improve hydrogen bonding and reduce clashes. 5 of 18 such sidechains are listed below:

Mol	Chain	Res	Type
1	F	427	ASN
1	F	546	GLN
1	F	512	GLN
1	C	459	ASN
1	F	323	HIS

5.3.3 RNA ⓘ

There are no RNA molecules in this entry.

5.4 Non-standard residues in protein, DNA, RNA chains ⓘ

There are no non-standard protein/DNA/RNA residues in this entry.

5.5 Carbohydrates ⓘ

There are no monosaccharides in this entry.

5.6 Ligand geometry

Of 12 ligands modelled in this entry, 3 are monoatomic - leaving 9 for Mogul analysis.

In the following table, the Counts columns list the number of bonds (or angles) for which Mogul statistics could be retrieved, the number of bonds (or angles) that are observed in the model and the number of bonds (or angles) that are defined in the Chemical Component Dictionary. The Link column lists molecule types, if any, to which the group is linked. The Z score for a bond length (or angle) is the number of standard deviations the observed value is removed from the expected value. A bond length (or angle) with $|Z| > 2$ is considered an outlier worth inspection. RMSZ is the root-mean-square of all Z scores of the bond lengths (or angles).

Mol	Type	Chain	Res	Link	Bond lengths			Bond angles		
					Counts	RMSZ	# Z > 2	Counts	RMSZ	# Z > 2
2	PO4	A	1581	3	4,4,4	1.26	0	6,6,6	0.70	0
2	PO4	C	1579	3	4,4,4	1.82	1 (25%)	6,6,6	2.43	4 (66%)
2	PO4	B	1579	3	4,4,4	1.03	0	6,6,6	1.01	0
2	PO4	B	1580	3	4,4,4	1.12	0	6,6,6	0.88	0
2	PO4	D	1580	-	4,4,4	0.88	0	6,6,6	0.62	0
2	PO4	A	1580	3	4,4,4	0.97	0	6,6,6	0.91	0
2	PO4	C	1580	3	4,4,4	1.72	1 (25%)	6,6,6	2.54	2 (33%)
2	PO4	E	1579	-	4,4,4	0.82	0	6,6,6	0.46	0
2	PO4	F	1580	-	4,4,4	0.94	0	6,6,6	0.43	0

All (2) bond length outliers are listed below:

Mol	Chain	Res	Type	Atoms	Z	Observed(Å)	Ideal(Å)
2	C	1579	PO4	P-O3	-2.88	1.45	1.54
2	C	1580	PO4	P-O2	-2.86	1.46	1.54

The worst 5 of 6 bond angle outliers are listed below:

Mol	Chain	Res	Type	Atoms	Z	Observed(°)	Ideal(°)
2	C	1580	PO4	O2-P-O1	-5.54	90.62	110.89
2	C	1579	PO4	O3-P-O1	-3.73	97.23	110.89
2	C	1579	PO4	O4-P-O3	-2.73	99.21	107.97
2	C	1579	PO4	O3-P-O2	2.61	116.35	107.97
2	C	1579	PO4	O4-P-O1	2.51	120.09	110.89

There are no chirality outliers.

There are no torsion outliers.

There are no ring outliers.

5 monomers are involved in 4 short contacts:

Mol	Chain	Res	Type	Clashes	Symm-Clashes
2	A	1581	PO4	1	0
2	B	1579	PO4	1	0
2	B	1580	PO4	1	0
2	D	1580	PO4	1	0
2	A	1580	PO4	2	0

5.7 Other polymers [i](#)

There are no such residues in this entry.

5.8 Polymer linkage issues [i](#)

There are no chain breaks in this entry.

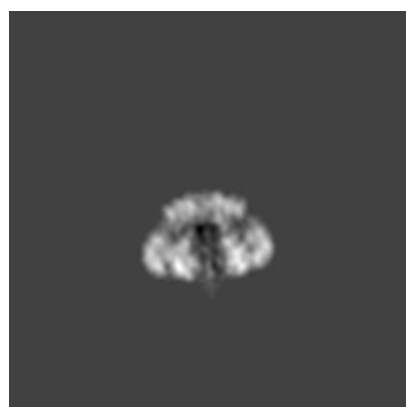
6 Map visualisation [i](#)

This section contains visualisations of the EMDB entry EMD-3087. These allow visual inspection of the internal detail of the map and identification of artifacts.

No raw map or half-maps were deposited for this entry and therefore no images, graphs, etc. pertaining to the raw map can be shown.

6.1 Orthogonal projections [i](#)

6.1.1 Primary map



X



Y

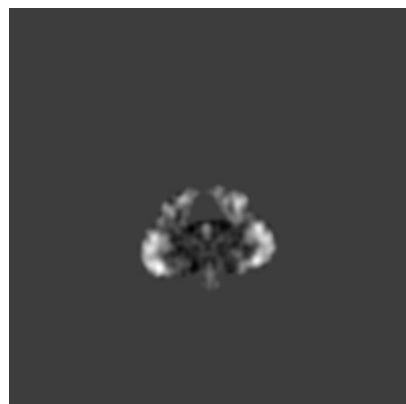


Z

The images above show the map projected in three orthogonal directions.

6.2 Central slices [i](#)

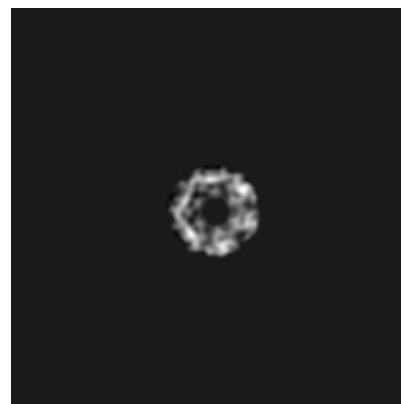
6.2.1 Primary map



X Index: 100



Y Index: 100



Z Index: 100

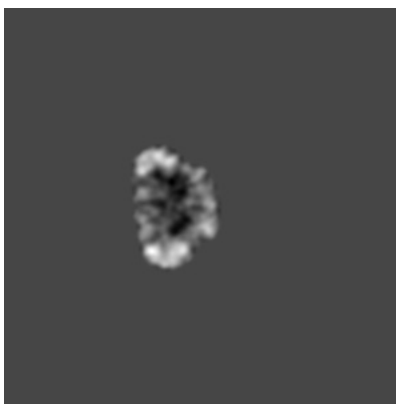
The images above show central slices of the map in three orthogonal directions.

6.3 Largest variance slices [i](#)

6.3.1 Primary map



X Index: 122



Y Index: 85

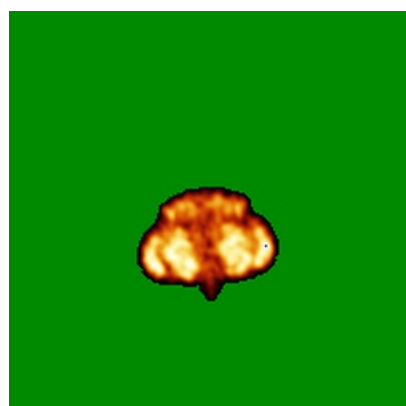


Z Index: 77

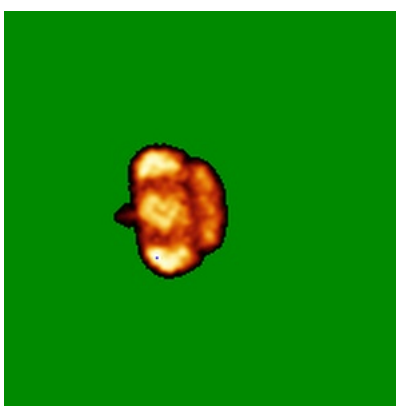
The images above show the largest variance slices of the map in three orthogonal directions.

6.4 Orthogonal standard-deviation projections (False-color) [i](#)

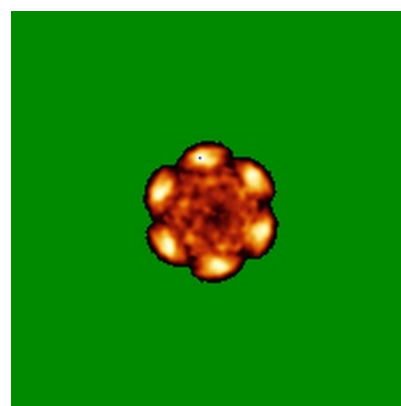
6.4.1 Primary map



X



Y

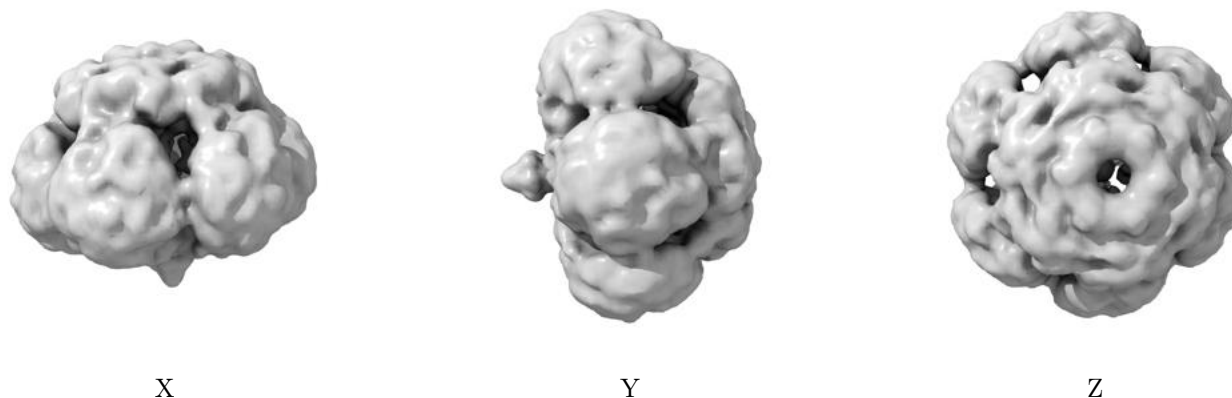


Z

The images above show the map standard deviation projections with false color in three orthogonal directions. Minimum values are shown in green, max in blue, and dark to light orange shades represent small to large values respectively.

6.5 Orthogonal surface views [i](#)

6.5.1 Primary map



The images above show the 3D surface view of the map at the recommended contour level 0.011. These images, in conjunction with the slice images, may facilitate assessment of whether an appropriate contour level has been provided.

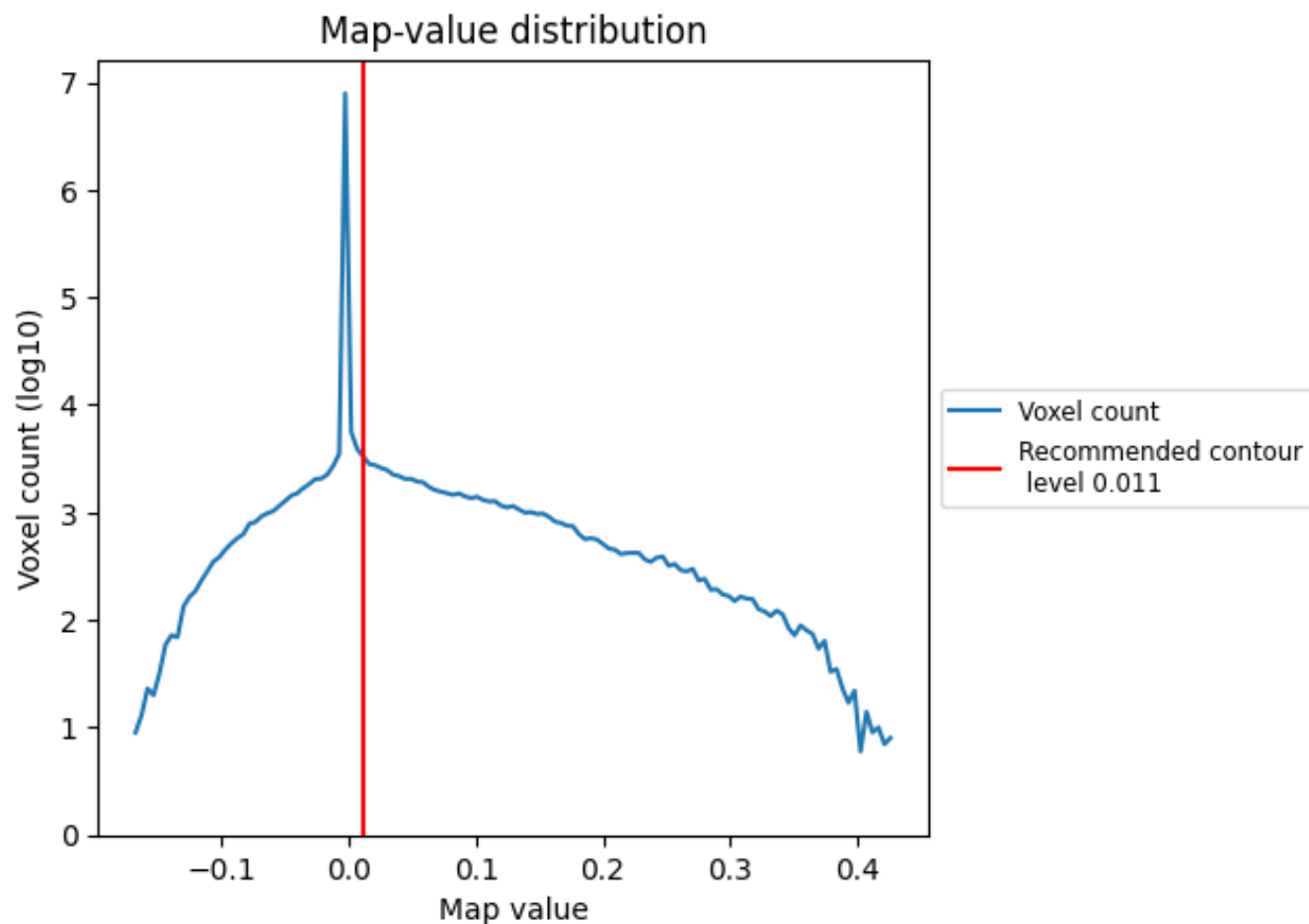
6.6 Mask visualisation [i](#)

This section was not generated. No masks/segmentation were deposited.

7 Map analysis [i](#)

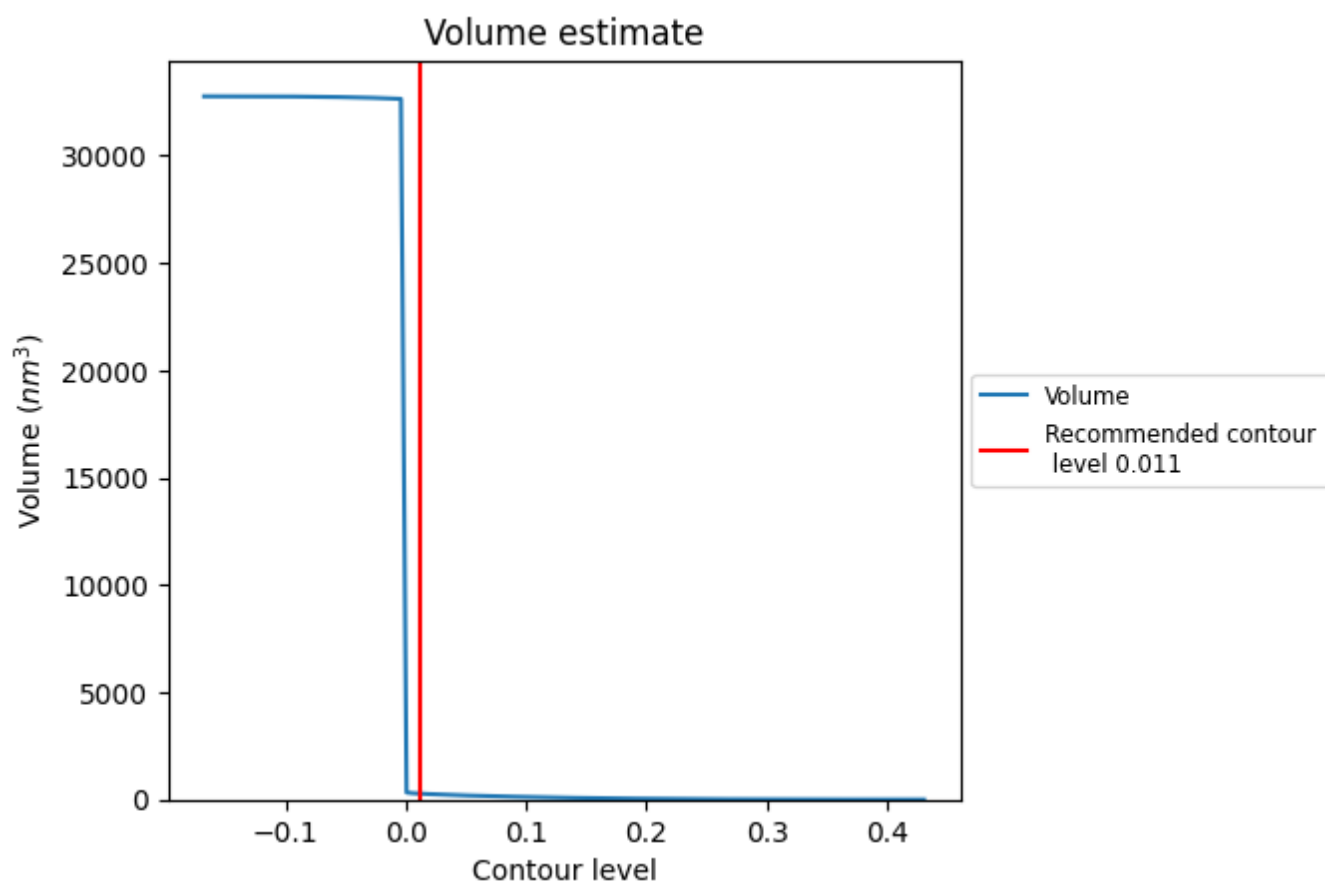
This section contains the results of statistical analysis of the map.

7.1 Map-value distribution [i](#)



The map-value distribution is plotted in 128 intervals along the x-axis. The y-axis is logarithmic. A spike in this graph at zero usually indicates that the volume has been masked.

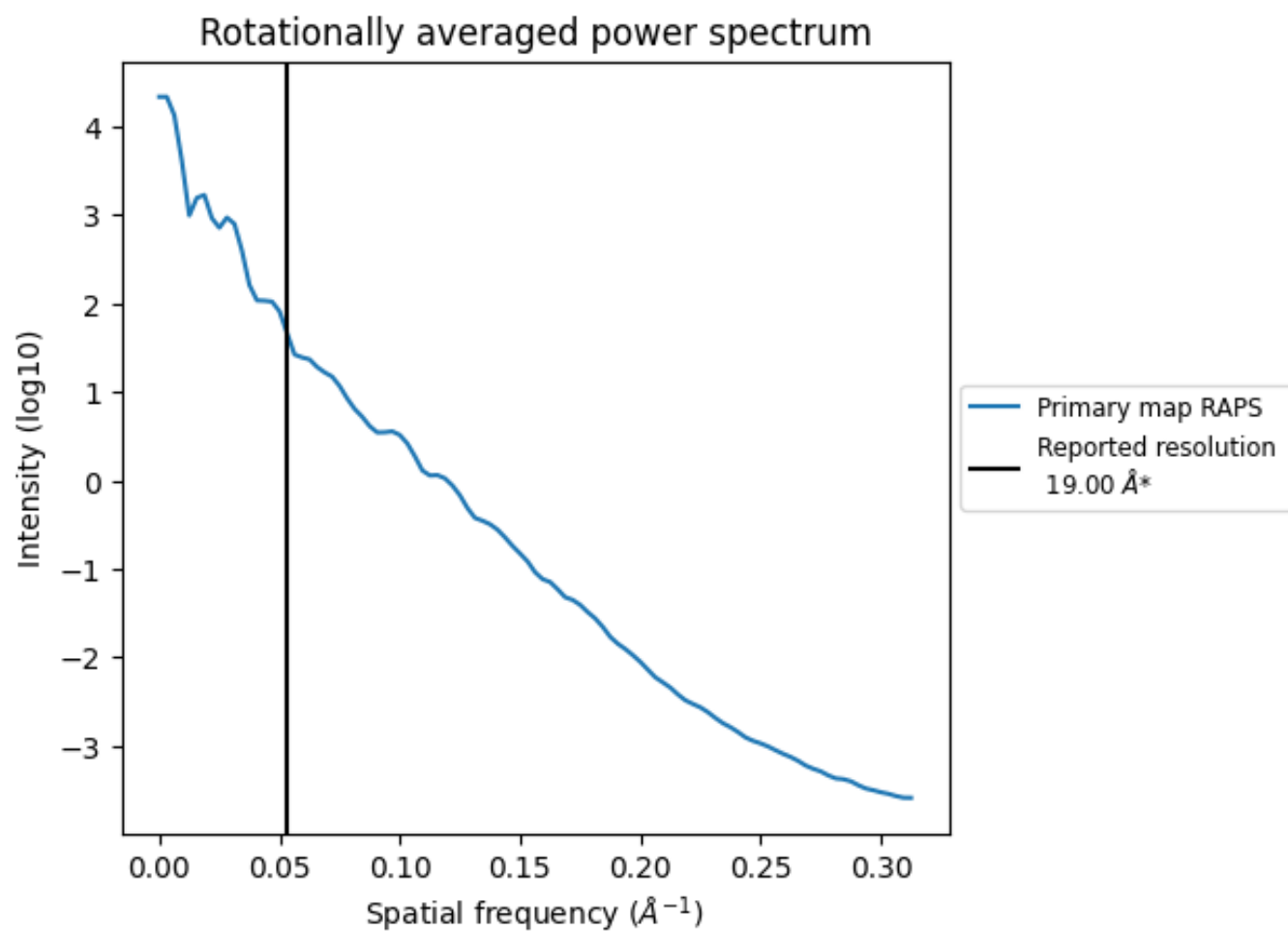
7.2 Volume estimate [i](#)



The volume at the recommended contour level is 278 nm^3 ; this corresponds to an approximate mass of 251 kDa.

The volume estimate graph shows how the enclosed volume varies with the contour level. The recommended contour level is shown as a vertical line and the intersection between the line and the curve gives the volume of the enclosed surface at the given level.

7.3 Rotationally averaged power spectrum ⓘ



*Reported resolution corresponds to spatial frequency of 0.053 Å⁻¹

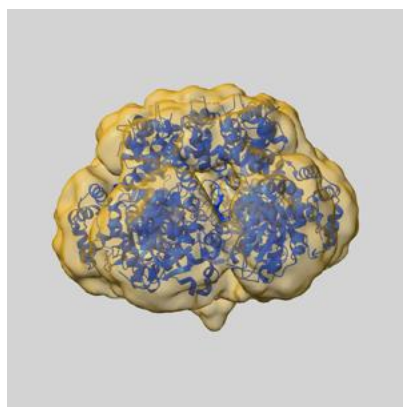
8 Fourier-Shell correlation

This section was not generated. No FSC curve or half-maps provided.

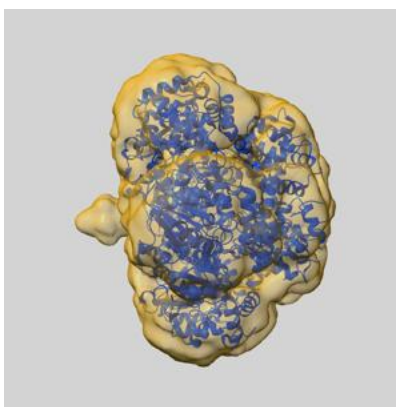
9 Map-model fit [i](#)

This section contains information regarding the fit between EMDB map EMD-3087 and PDB model 5A9K. Per-residue inclusion information can be found in [section 3](#) on [page 6](#).

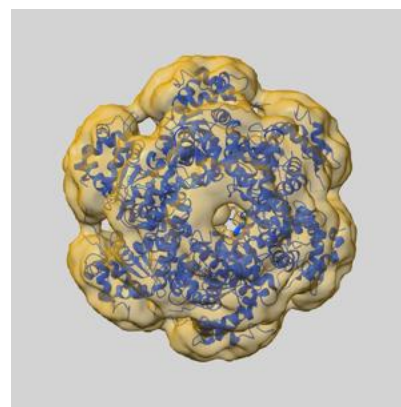
9.1 Map-model overlay [i](#)



X



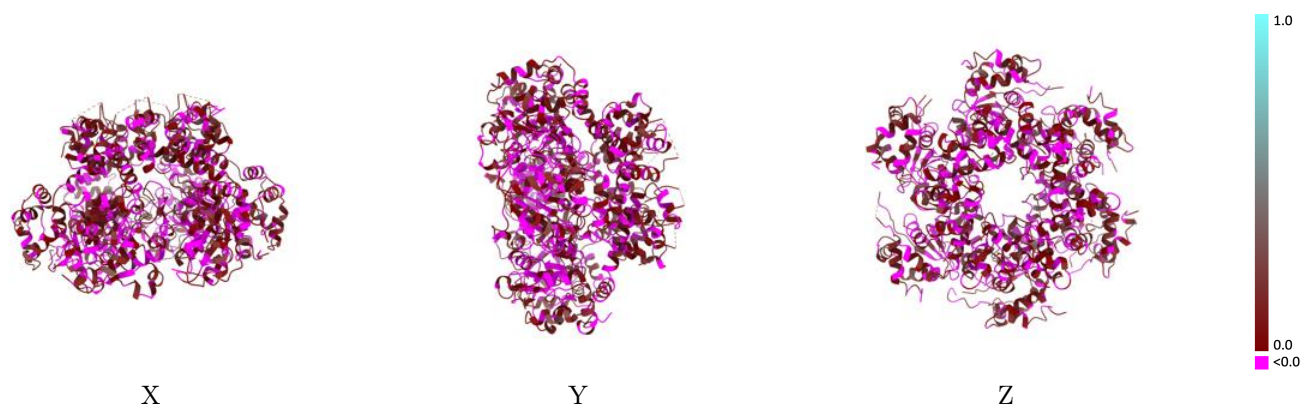
Y



Z

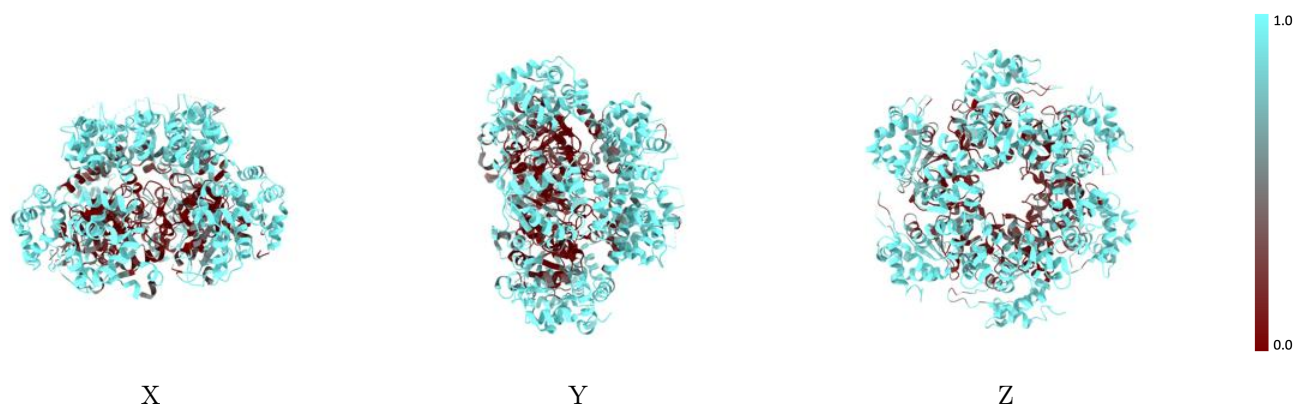
The images above show the 3D surface view of the map at the recommended contour level 0.011 at 50% transparency in yellow overlaid with a ribbon representation of the model coloured in blue. These images allow for the visual assessment of the quality of fit between the atomic model and the map.

9.2 Q-score mapped to coordinate model [i](#)



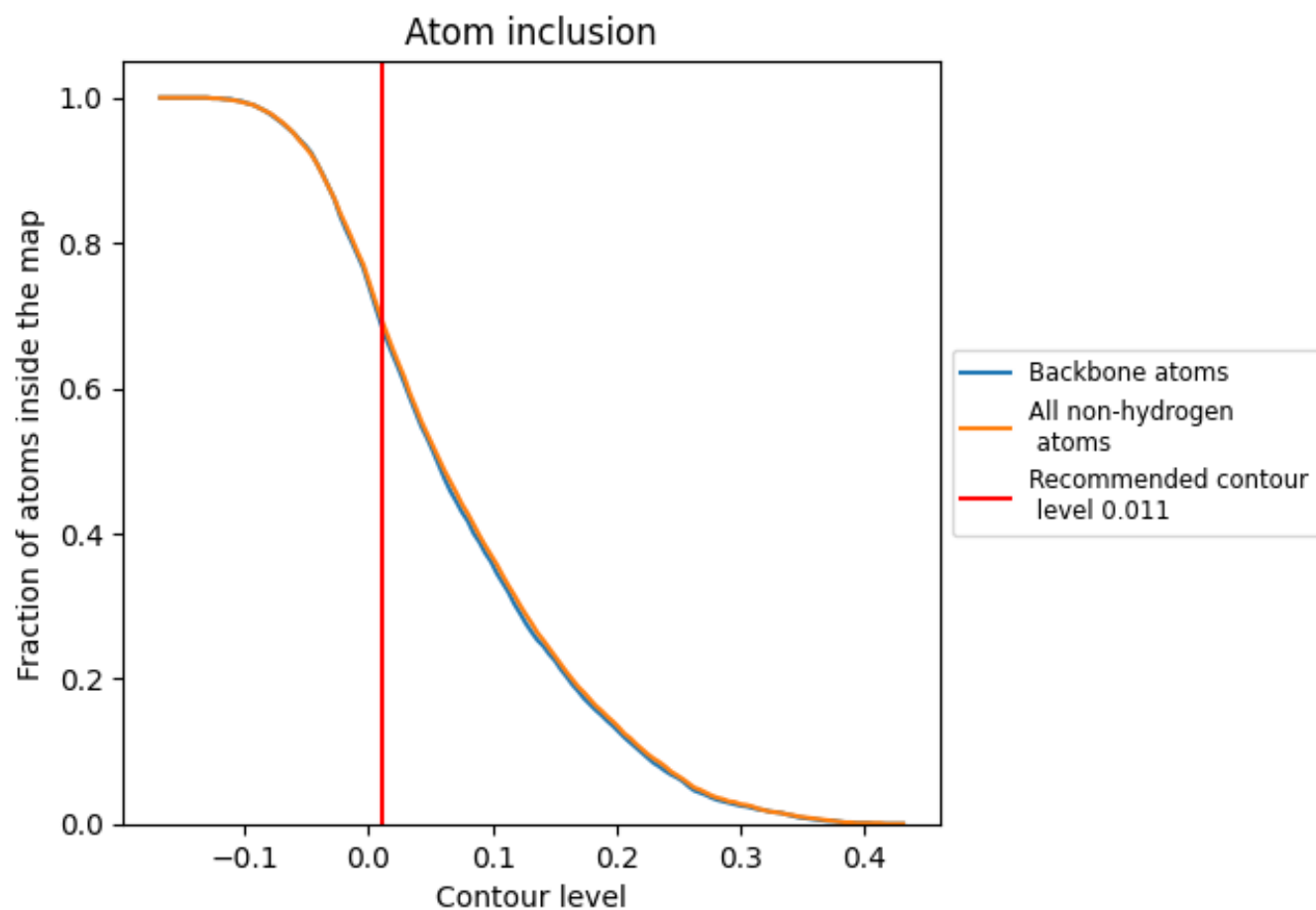
The images above show the model with each residue coloured according to its Q-score. This shows their resolvability in the map with higher Q-score values reflecting better resolvability. Please note: Q-score is calculating the resolvability of atoms, and thus high values are only expected at resolutions at which atoms can be resolved. Low Q-score values may therefore be expected for many entries.

9.3 Atom inclusion mapped to coordinate model [i](#)



The images above show the model with each residue coloured according to its atom inclusion. This shows to what extent they are inside the map at the recommended contour level (0.011).

9.4 Atom inclusion ⓘ



At the recommended contour level, 68% of all backbone atoms, 69% of all non-hydrogen atoms, are inside the map.

9.5 Map-model fit summary ⓘ

The table lists the average atom inclusion at the recommended contour level (0.011) and Q-score for the entire model and for each chain.

Chain	Atom inclusion	Q-score
All	<div><div></div>0.6920</div>	<div><div></div>0.0420</div>
A	<div><div></div>0.6920</div>	<div><div></div>0.0370</div>
B	<div><div></div>0.6890</div>	<div><div></div>0.0420</div>
C	<div><div></div>0.6720</div>	<div><div></div>0.0460</div>
D	<div><div></div>0.6710</div>	<div><div></div>0.0430</div>
E	<div><div></div>0.7070</div>	<div><div></div>0.0420</div>
F	<div><div></div>0.7350</div>	<div><div></div>0.0400</div>

1.0

0.0

<0.0