



Full wwPDB X-ray Structure Validation Report ⓘ

Apr 28, 2024 – 05:04 pm BST

PDB ID : 4CQ8
Title : Plasmodium falciparum dihydroorotate dehydrogenase (DHODH) in complex with Genz-669178
Authors : Rowland, P.
Deposited on : 2014-02-12
Resolution : 1.98 Å(reported)

This is a Full wwPDB X-ray Structure Validation Report for a publicly released PDB entry.

We welcome your comments at validation@mail.wwpdb.org

A user guide is available at

<https://www.wwpdb.org/validation/2017/XrayValidationReportHelp>

with specific help available everywhere you see the ⓘ symbol.

The types of validation reports are described at

<http://www.wwpdb.org/validation/2017/FAQs#types>.

The following versions of software and data (see [references ⓘ](#)) were used in the production of this report:

MolProbity	:	4.02b-467
Mogul	:	1.8.4, CSD as541be (2020)
Xtriage (Phenix)	:	1.13
EDS	:	2.36.2
buster-report	:	1.1.7 (2018)
Percentile statistics	:	20191225.v01 (using entries in the PDB archive December 25th 2019)
Refmac	:	5.8.0158
CCP4	:	7.0.044 (Gargrove)
Ideal geometry (proteins)	:	Engh & Huber (2001)
Ideal geometry (DNA, RNA)	:	Parkinson et al. (1996)
Validation Pipeline (wwPDB-VP)	:	2.36.2

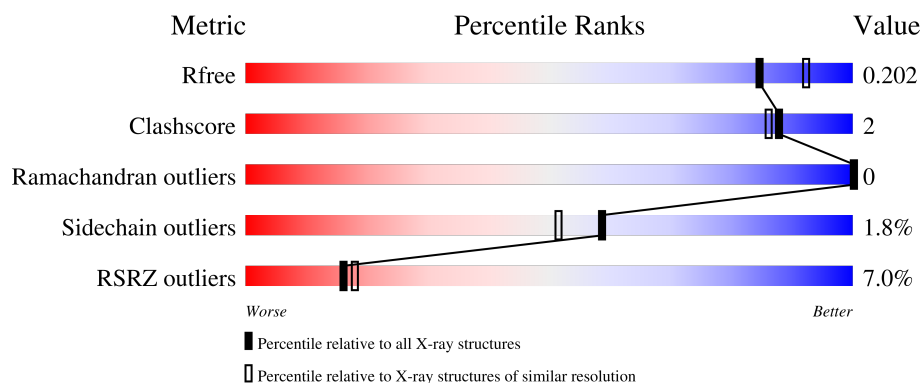
1 Overall quality at a glance

The following experimental techniques were used to determine the structure:

X-RAY DIFFRACTION

The reported resolution of this entry is 1.98 Å.

Percentile scores (ranging between 0-100) for global validation metrics of the entry are shown in the following graphic. The table shows the number of entries on which the scores are based.



Metric	Whole archive (#Entries)	Similar resolution (#Entries, resolution range(Å))
R_{free}	130704	11647 (2.00-1.96)
Clashscore	141614	1014 (1.98-1.98)
Ramachandran outliers	138981	1006 (1.98-1.98)
Sidechain outliers	138945	1006 (1.98-1.98)
RSRZ outliers	127900	11410 (2.00-1.96)

The table below summarises the geometric issues observed across the polymeric chains and their fit to the electron density. The red, orange, yellow and green segments of the lower bar indicate the fraction of residues that contain outliers for ≥ 3 , 2, 1 and 0 types of geometric quality criteria respectively. A grey segment represents the fraction of residues that are not modelled. The numeric value for each fraction is indicated below the corresponding segment, with a dot representing fractions $\leq 5\%$. The upper red bar (where present) indicates the fraction of residues that have poor fit to the electron density. The numeric value is given above the bar.

Mol	Chain	Length	Quality of chain
1	A	401	<div> <div>5%</div> <div> <div></div> <div>90%</div> <div>6%</div> </div> </div>
1	B	401	<div> <div>8%</div> <div> <div></div> <div>87%</div> <div>6% • 6%</div> </div> </div>

2 Entry composition

There are 5 unique types of molecules in this entry. The entry contains 6700 atoms, of which 0 are hydrogens and 0 are deuteriums.

In the tables below, the ZeroOcc column contains the number of atoms modelled with zero occupancy, the AltConf column contains the number of residues with at least one atom in alternate conformation and the Trace column contains the number of residues modelled with at most 2 atoms.

- Molecule 1 is a protein called DIHYDROOROTATE DEHYDROGENASE.

Mol	Chain	Residues	Atoms					ZeroOcc	AltConf	Trace
1	A	378	Total	C	N	O	S	0	1	0
			3001	1921	502	564	14			
1	B	378	Total	C	N	O	S	0	1	0
			3001	1921	502	564	14			

There are 38 discrepancies between the modelled and reference sequences:

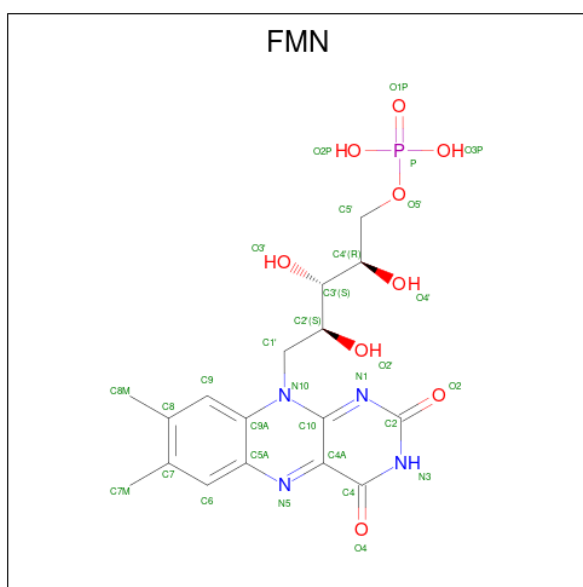
Chain	Residue	Modelled	Actual	Comment	Reference
A	139	MET	-	expression tag	UNP Q54A96
A	140	GLY	-	expression tag	UNP Q54A96
A	141	HIS	-	expression tag	UNP Q54A96
A	142	HIS	-	expression tag	UNP Q54A96
A	143	HIS	-	expression tag	UNP Q54A96
A	144	HIS	-	expression tag	UNP Q54A96
A	145	HIS	-	expression tag	UNP Q54A96
A	146	HIS	-	expression tag	UNP Q54A96
A	147	ALA	-	expression tag	UNP Q54A96
A	148	GLU	-	expression tag	UNP Q54A96
A	149	ASN	-	expression tag	UNP Q54A96
A	150	LEU	-	expression tag	UNP Q54A96
A	151	TYR	-	expression tag	UNP Q54A96
A	152	PHE	-	expression tag	UNP Q54A96
A	153	GLN	-	expression tag	UNP Q54A96
A	154	GLY	-	expression tag	UNP Q54A96
A	155	ALA	-	expression tag	UNP Q54A96
A	156	ASP	-	expression tag	UNP Q54A96
A	157	PRO	-	expression tag	UNP Q54A96
B	139	MET	-	expression tag	UNP Q54A96
B	140	GLY	-	expression tag	UNP Q54A96
B	141	HIS	-	expression tag	UNP Q54A96
B	142	HIS	-	expression tag	UNP Q54A96
B	143	HIS	-	expression tag	UNP Q54A96
B	144	HIS	-	expression tag	UNP Q54A96

Continued on next page...

Continued from previous page...

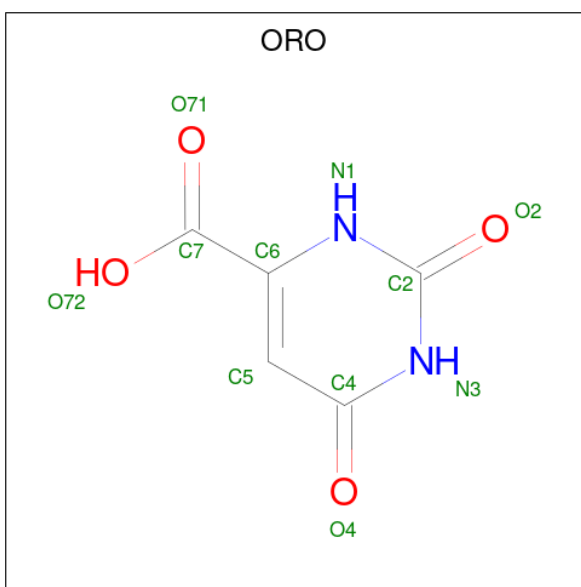
Chain	Residue	Modelled	Actual	Comment	Reference
B	145	HIS	-	expression tag	UNP Q54A96
B	146	HIS	-	expression tag	UNP Q54A96
B	147	ALA	-	expression tag	UNP Q54A96
B	148	GLU	-	expression tag	UNP Q54A96
B	149	ASN	-	expression tag	UNP Q54A96
B	150	LEU	-	expression tag	UNP Q54A96
B	151	TYR	-	expression tag	UNP Q54A96
B	152	PHE	-	expression tag	UNP Q54A96
B	153	GLN	-	expression tag	UNP Q54A96
B	154	GLY	-	expression tag	UNP Q54A96
B	155	ALA	-	expression tag	UNP Q54A96
B	156	ASP	-	expression tag	UNP Q54A96
B	157	PRO	-	expression tag	UNP Q54A96

- Molecule 2 is FLAVIN MONONUCLEOTIDE (three-letter code: FMN) (formula: $C_{17}H_{21}N_4O_9P$).



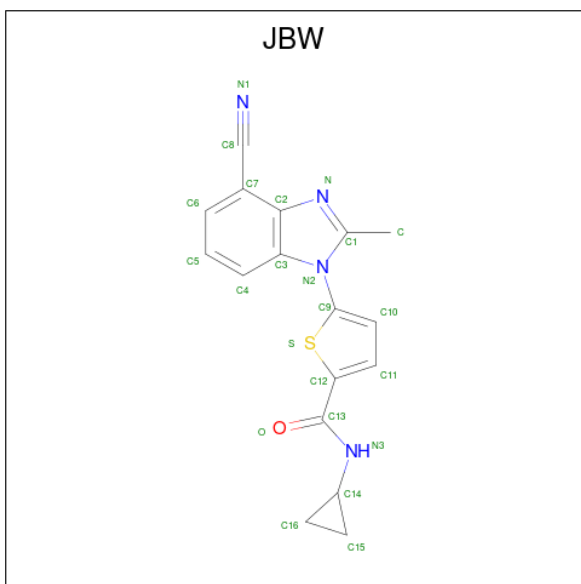
Mol	Chain	Residues	Atoms					ZeroOcc	AltConf
2	A	1	Total	C	N	O	P	0	0
			31	17	4	9	1		
2	B	1	Total	C	N	O	P	0	0
			31	17	4	9	1		

- Molecule 3 is OROTIC ACID (three-letter code: ORO) (formula: $C_5H_4N_2O_4$).



Mol	Chain	Residues	Atoms				ZeroOcc	AltConf
3	A	1	Total	C	N	O	0	0
			11	5	2	4		
3	B	1	Total	C	N	O	0	0
			11	5	2	4		

- Molecule 4 is 5-(4-cyano-2-methyl-1H-benzimidazol-1-yl)-N-cyclopropylthiophene-2-carboxamide (three-letter code: JBW) (formula: C₁₇H₁₄N₄OS).



Mol	Chain	Residues	Atoms					ZeroOcc	AltConf
4	A	1	Total	C	N	O	S	0	0
			23	17	4	1	1		

Continued on next page...

Continued from previous page...

Mol	Chain	Residues	Atoms					ZeroOcc	AltConf
4	B	1	Total	C	N	O	S	0	0
			23	17	4	1	1		

- Molecule 5 is water.

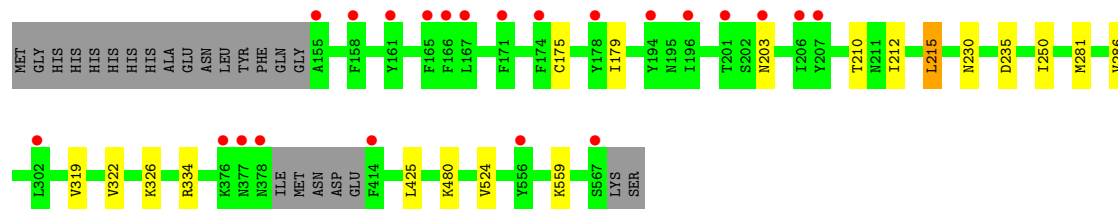
Mol	Chain	Residues	Atoms		ZeroOcc	AltConf
5	A	327	Total	O	0	0
			327	327		
5	B	241	Total	O	0	0
			241	241		

3 Residue-property plots


These plots are drawn for all protein, RNA, DNA and oligosaccharide chains in the entry. The first graphic for a chain summarises the proportions of the various outlier classes displayed in the second graphic. The second graphic shows the sequence view annotated by issues in geometry and electron density. Residues are color-coded according to the number of geometric quality criteria for which they contain at least one outlier: green = 0, yellow = 1, orange = 2 and red = 3 or more. A red dot above a residue indicates a poor fit to the electron density ($RSRZ > 2$). Stretches of 2 or more consecutive residues without any outlier are shown as a green connector. Residues present in the sample, but not in the model, are shown in grey.

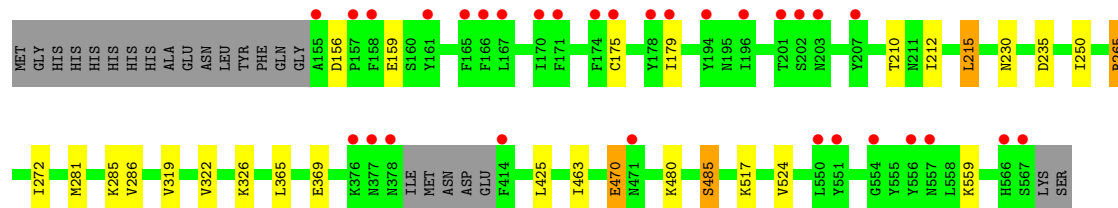
• Molecule 1: DIHYDROOROTATE DEHYDROGENASE

Chain A: 



• Molecule 1: DIHYDROOROTATE DEHYDROGENASE

Chain B: 



4 Data and refinement statistics

Property	Value	Source
Space group	C 1 2 1	Depositor
Cell constants a, b, c, α , β , γ	147.82Å 69.13Å 103.85Å 90.00° 103.84° 90.00°	Depositor
Resolution (Å)	46.86 – 1.98 46.86 – 1.98	Depositor EDS
% Data completeness (in resolution range)	97.3 (46.86-1.98) 97.3 (46.86-1.98)	Depositor EDS
R_{merge}	0.05	Depositor
R_{sym}	(Not available)	Depositor
$\langle I/\sigma(I) \rangle$ ¹	2.06 (at 1.98Å)	Xtriage
Refinement program	BUSTER 2.11.5	Depositor
R, R_{free}	0.170 , 0.190 0.177 , 0.202	Depositor DCC
R_{free} test set	2784 reflections (4.03%)	wwPDB-VP
Wilson B-factor (Å ²)	34.9	Xtriage
Anisotropy	0.684	Xtriage
Bulk solvent k_{sol} (e/Å ³), B_{sol} (Å ²)	0.32 , 55.4	EDS
L-test for twinning ²	$\langle L \rangle = 0.48$, $\langle L^2 \rangle = 0.31$	Xtriage
Estimated twinning fraction	No twinning to report.	Xtriage
F_o, F_c correlation	0.97	EDS
Total number of atoms	6700	wwPDB-VP
Average B, all atoms (Å ²)	52.0	wwPDB-VP

Xtriage's analysis on translational NCS is as follows: *The largest off-origin peak in the Patterson function is 5.71% of the height of the origin peak. No significant pseudotranslation is detected.*

¹Intensities estimated from amplitudes.

²Theoretical values of $\langle |L| \rangle$, $\langle L^2 \rangle$ for acentric reflections are 0.5, 0.333 respectively for untwinned datasets, and 0.375, 0.2 for perfectly twinned datasets.

5 Model quality

5.1 Standard geometry

Bond lengths and bond angles in the following residue types are not validated in this section: FMN, ORO, JBW

The Z score for a bond length (or angle) is the number of standard deviations the observed value is removed from the expected value. A bond length (or angle) with $|Z| > 5$ is considered an outlier worth inspection. RMSZ is the root-mean-square of all Z scores of the bond lengths (or angles).

Mol	Chain	Bond lengths		Bond angles	
		RMSZ	# Z >5	RMSZ	# Z >5
1	A	0.51	0/3056	0.61	0/4114
1	B	0.47	0/3056	0.61	0/4114
All	All	0.49	0/6112	0.61	0/8228

There are no bond length outliers.

There are no bond angle outliers.

There are no chirality outliers.

There are no planarity outliers.

5.2 Too-close contacts

In the following table, the Non-H and H(model) columns list the number of non-hydrogen atoms and hydrogen atoms in the chain respectively. The H(added) column lists the number of hydrogen atoms added and optimized by MolProbity. The Clashes column lists the number of clashes within the asymmetric unit, whereas Symm-Clashes lists symmetry-related clashes.

Mol	Chain	Non-H	H(model)	H(added)	Clashes	Symm-Clashes
1	A	3001	0	3043	10	0
1	B	3001	0	3043	15	0
2	A	31	0	19	0	0
2	B	31	0	19	0	0
3	A	11	0	3	0	0
3	B	11	0	3	0	0
4	A	23	0	14	0	0
4	B	23	0	14	0	0
5	A	327	0	0	1	0
5	B	241	0	0	0	0
All	All	6700	0	6158	24	0

The all-atom clashscore is defined as the number of clashes found per 1000 atoms (including hydrogen atoms). The all-atom clashscore for this structure is 2.

All (24) close contacts within the same asymmetric unit are listed below, sorted by their clash magnitude.

Atom-1	Atom-2	Interatomic distance (Å)	Clash overlap (Å)
1:A:230:ASN:HB3	1:A:281:MET:HE1	1.73	0.70
1:B:230:ASN:HB3	1:B:281:MET:HE1	1.78	0.66
1:B:322:VAL:HG12	1:B:326:LYS:HE2	1.86	0.58
1:B:210:THR:HA	1:B:559:LYS:HE3	1.86	0.57
1:A:322:VAL:HG12	1:A:326:LYS:HE2	1.86	0.57
1:A:210:THR:HA	1:A:559:LYS:HE3	1.87	0.56
1:B:175:CYS:HA	1:B:179:ILE:HD12	1.95	0.49
1:B:156:ASP:HB3	1:B:159:GLU:HG3	1.95	0.48
1:A:175:CYS:HA	1:A:179:ILE:HD12	1.96	0.48
1:A:250:ILE:HG21	1:A:286:VAL:HG11	1.97	0.47
1:B:281:MET:HB2	1:B:281:MET:HE2	1.71	0.47
1:B:265:ARG:HB3	1:B:272:ILE:HG12	1.96	0.46
1:B:463:ILE:HD13	1:B:480:LYS:HB3	1.99	0.45
1:B:250:ILE:HG21	1:B:286:VAL:HG11	1.99	0.44
1:B:281:MET:HE3	1:B:285:LYS:HG3	1.98	0.44
1:B:212:ILE:O	1:B:215:LEU:HB2	2.18	0.44
1:A:212:ILE:O	1:A:215:LEU:HB2	2.18	0.44
1:B:215:LEU:HD22	1:B:425:LEU:HD12	2.00	0.43
1:A:215:LEU:HD22	1:A:425:LEU:HD12	1.99	0.42
1:B:485:SER:HB3	1:B:517:LYS:NZ	2.34	0.42
1:A:281:MET:HE2	1:A:281:MET:HB2	1.70	0.42
1:B:365:LEU:O	1:B:369:GLU:HB2	2.21	0.41
1:A:334:ARG:HH21	1:B:470:GLU:HG3	1.86	0.41
1:A:480:LYS:HB2	5:A:2122:HOH:O	2.21	0.40

There are no symmetry-related clashes.

5.3 Torsion angles ⓘ

5.3.1 Protein backbone ⓘ

In the following table, the Percentiles column shows the percent Ramachandran outliers of the chain as a percentile score with respect to all X-ray entries followed by that with respect to entries of similar resolution.

The Analysed column shows the number of residues for which the backbone conformation was analysed, and the total number of residues.

Mol	Chain	Analysed	Favoured	Allowed	Outliers	Percentiles	
1	A	375/401 (94%)	367 (98%)	8 (2%)	0	100	100
1	B	375/401 (94%)	367 (98%)	8 (2%)	0	100	100
All	All	750/802 (94%)	734 (98%)	16 (2%)	0	100	100

There are no Ramachandran outliers to report.

5.3.2 Protein sidechains ⓘ

In the following table, the Percentiles column shows the percent sidechain outliers of the chain as a percentile score with respect to all X-ray entries followed by that with respect to entries of similar resolution.

The Analysed column shows the number of residues for which the sidechain conformation was analysed, and the total number of residues.

Mol	Chain	Analysed	Rotameric	Outliers	Percentiles	
1	A	335/354 (95%)	330 (98%)	5 (2%)	65	59
1	B	335/354 (95%)	328 (98%)	7 (2%)	53	47
All	All	670/708 (95%)	658 (98%)	12 (2%)	59	51

All (12) residues with a non-rotameric sidechain are listed below:

Mol	Chain	Res	Type
1	A	203	ASN
1	A	215	LEU
1	A	235	ASP
1	A	319	VAL
1	A	524	VAL
1	B	215	LEU
1	B	235	ASP
1	B	265	ARG
1	B	319	VAL
1	B	470	GLU
1	B	485	SER
1	B	524	VAL

Sometimes sidechains can be flipped to improve hydrogen bonding and reduce clashes. All (2) such sidechains are listed below:

Mol	Chain	Res	Type
1	A	462	GLN

Continued on next page...

Continued from previous page...

Mol	Chain	Res	Type
1	B	462	GLN

5.3.3 RNA ⓘ

There are no RNA molecules in this entry.

5.4 Non-standard residues in protein, DNA, RNA chains ⓘ

There are no non-standard protein/DNA/RNA residues in this entry.

5.5 Carbohydrates ⓘ

There are no monosaccharides in this entry.

5.6 Ligand geometry ⓘ

6 ligands are modelled in this entry.

In the following table, the Counts columns list the number of bonds (or angles) for which Mogul statistics could be retrieved, the number of bonds (or angles) that are observed in the model and the number of bonds (or angles) that are defined in the Chemical Component Dictionary. The Link column lists molecule types, if any, to which the group is linked. The Z score for a bond length (or angle) is the number of standard deviations the observed value is removed from the expected value. A bond length (or angle) with $|Z| > 2$ is considered an outlier worth inspection. RMSZ is the root-mean-square of all Z scores of the bond lengths (or angles).

Mol	Type	Chain	Res	Link	Bond lengths			Bond angles		
					Counts	RMSZ	# $ Z > 2$	Counts	RMSZ	# $ Z > 2$
3	ORO	B	900	-	9,11,11	1.86	2 (22%)	8,15,15	3.65	3 (37%)
3	ORO	A	900	-	9,11,11	1.84	3 (33%)	8,15,15	3.31	2 (25%)
2	FMN	A	800	-	33,33,33	0.61	0	48,50,50	0.50	0
2	FMN	B	800	-	33,33,33	0.43	0	48,50,50	0.50	0
4	JBW	A	4000	-	21,26,26	1.55	1 (4%)	20,38,38	0.67	0
4	JBW	B	4000	-	21,26,26	1.53	1 (4%)	20,38,38	0.63	0

In the following table, the Chirals column lists the number of chiral outliers, the number of chiral centers analysed, the number of these observed in the model and the number defined in the Chemical Component Dictionary. Similar counts are reported in the Torsion and Rings columns. '-' means no outliers of that kind were identified.

Mol	Type	Chain	Res	Link	Chirals	Torsions	Rings
3	ORO	B	900	-	-	4/4/4/4	0/1/1/1
3	ORO	A	900	-	-	4/4/4/4	0/1/1/1
2	FMN	A	800	-	-	1/18/18/18	0/3/3/3
2	FMN	B	800	-	-	1/18/18/18	0/3/3/3
4	JBW	A	4000	-	-	1/8/16/16	0/4/4/4
4	JBW	B	4000	-	-	1/8/16/16	0/4/4/4

All (7) bond length outliers are listed below:

Mol	Chain	Res	Type	Atoms	Z	Observed(Å)	Ideal(Å)
4	A	4000	JBW	C7-C2	-6.42	1.37	1.43
4	B	4000	JBW	C7-C2	-6.34	1.37	1.43
3	B	900	ORO	C4-N3	3.84	1.39	1.33
3	A	900	ORO	C4-N3	3.75	1.39	1.33
3	B	900	ORO	C6-N1	3.31	1.39	1.34
3	A	900	ORO	C6-N1	3.21	1.39	1.34
3	A	900	ORO	C6-C7	-2.16	1.47	1.50

All (5) bond angle outliers are listed below:

Mol	Chain	Res	Type	Atoms	Z	Observed(°)	Ideal(°)
3	B	900	ORO	C5-C4-N3	-7.85	114.92	124.08
3	A	900	ORO	C5-C4-N3	-7.57	115.24	124.08
3	B	900	ORO	C6-C5-C4	5.79	120.47	116.73
3	A	900	ORO	C6-C5-C4	4.36	119.55	116.73
3	B	900	ORO	C5-C6-C7	2.37	124.69	119.57

There are no chirality outliers.

All (12) torsion outliers are listed below:

Mol	Chain	Res	Type	Atoms
3	A	900	ORO	N1-C6-C7-O71
3	A	900	ORO	N1-C6-C7-O72
3	A	900	ORO	C5-C6-C7-O71
3	A	900	ORO	C5-C6-C7-O72
3	B	900	ORO	N1-C6-C7-O71
3	B	900	ORO	N1-C6-C7-O72
3	B	900	ORO	C5-C6-C7-O71
3	B	900	ORO	C5-C6-C7-O72
2	A	800	FMN	C4'-C5'-O5'-P
2	B	800	FMN	C4'-C5'-O5'-P
4	A	4000	JBW	C2-C7-C8-N1

Continued on next page...

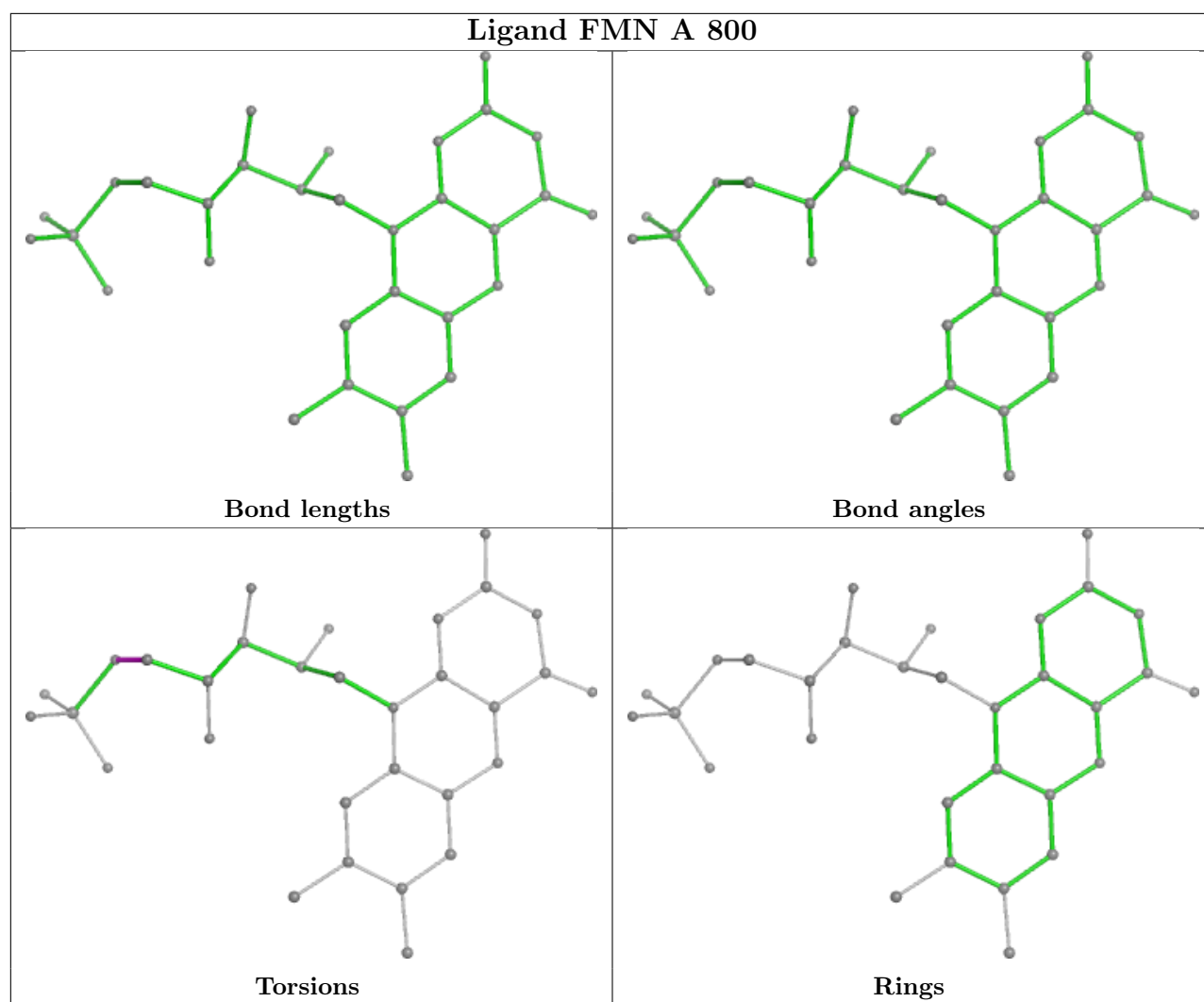
Continued from previous page...

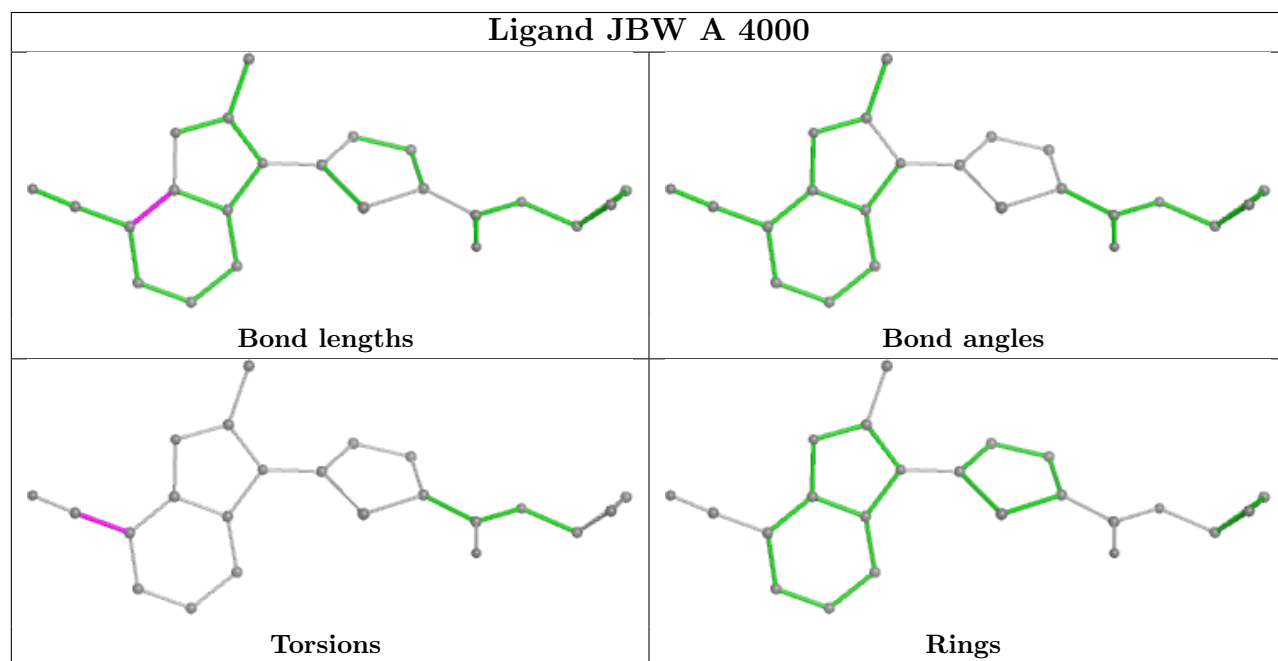
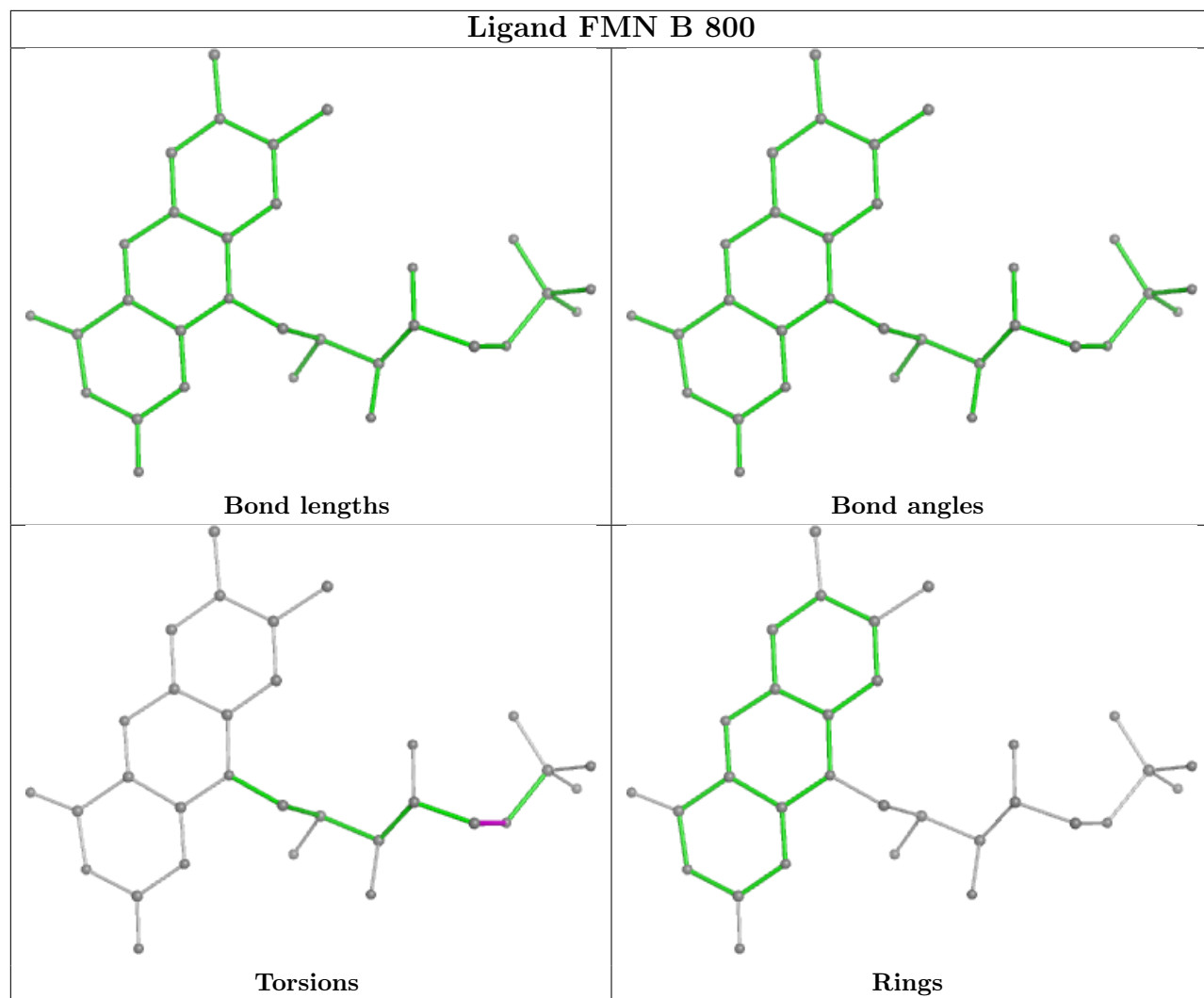
Mol	Chain	Res	Type	Atoms
4	B	4000	JBW	C2-C7-C8-N1

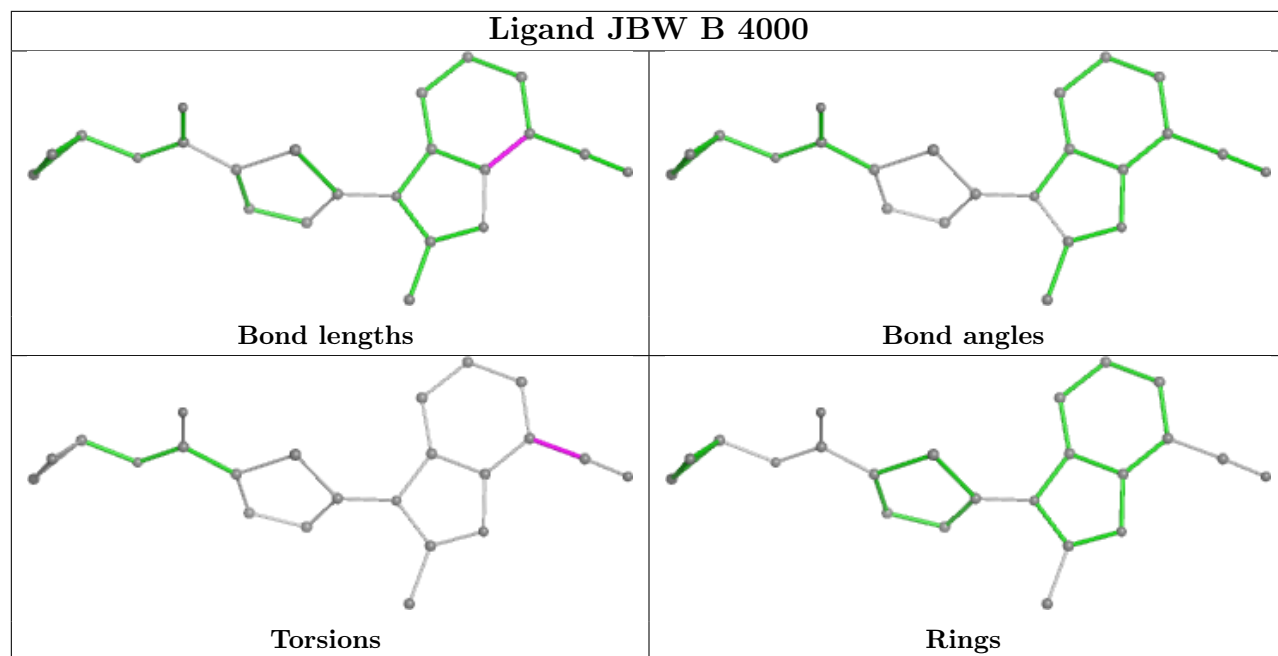
There are no ring outliers.

No monomer is involved in short contacts.

The following is a two-dimensional graphical depiction of Mogul quality analysis of bond lengths, bond angles, torsion angles, and ring geometry for all instances of the Ligand of Interest. In addition, ligands with molecular weight > 250 and outliers as shown on the validation Tables will also be included. For torsion angles, if less than 5% of the Mogul distribution of torsion angles is within 10 degrees of the torsion angle in question, then that torsion angle is considered an outlier. Any bond that is central to one or more torsion angles identified as an outlier by Mogul will be highlighted in the graph. For rings, the root-mean-square deviation (RMSD) between the ring in question and similar rings identified by Mogul is calculated over all ring torsion angles. If the average RMSD is greater than 60 degrees and the minimal RMSD between the ring in question and any Mogul-identified rings is also greater than 60 degrees, then that ring is considered an outlier. The outliers are highlighted in purple. The color gray indicates Mogul did not find sufficient equivalents in the CSD to analyse the geometry.







5.7 Other polymers [i](#)

There are no such residues in this entry.

5.8 Polymer linkage issues [i](#)

There are no chain breaks in this entry.

6 Fit of model and data

6.1 Protein, DNA and RNA chains

In the following table, the column labelled ‘#RSRZ > 2’ contains the number (and percentage) of RSRZ outliers, followed by percent RSRZ outliers for the chain as percentile scores relative to all X-ray entries and entries of similar resolution. The OWAB column contains the minimum, median, 95th percentile and maximum values of the occupancy-weighted average B-factor per residue. The column labelled ‘Q < 0.9’ lists the number of (and percentage) of residues with an average occupancy less than 0.9.

Mol	Chain	Analysed	<RSRZ>	#RSRZ>2	OWAB(Å ²)	Q<0.9
1	A	378/401 (94%)	0.21	22 (5%) 23 25	29, 44, 77, 140	0
1	B	378/401 (94%)	0.19	31 (8%) 11 13	31, 50, 88, 141	0
All	All	756/802 (94%)	0.20	53 (7%) 16 18	29, 47, 83, 141	0

All (53) RSRZ outliers are listed below:

Mol	Chain	Res	Type	RSRZ
1	A	414	PHE	8.1
1	B	158	PHE	6.1
1	A	377	ASN	5.7
1	A	161	TYR	4.9
1	A	158	PHE	4.9
1	B	166	PHE	4.9
1	A	556	TYR	4.7
1	B	196	ILE	4.7
1	B	567	SER	4.6
1	A	167	LEU	4.5
1	A	378	ASN	4.4
1	A	155	ALA	4.1
1	B	178	TYR	4.0
1	B	174	PHE	4.0
1	B	194	TYR	3.9
1	A	171	PHE	3.7
1	B	376	LYS	3.7
1	B	556	TYR	3.7
1	B	378	ASN	3.6
1	A	196	ILE	3.6
1	B	165	PHE	3.5
1	A	567	SER	3.4
1	B	377	ASN	3.4
1	B	157	PRO	3.3

Continued on next page...

Continued from previous page...

Mol	Chain	Res	Type	RSRZ
1	A	165	PHE	3.3
1	A	376	LYS	3.2
1	A	166	PHE	3.1
1	B	167	LEU	3.0
1	A	206	ILE	3.0
1	B	170	ILE	3.0
1	A	207	TYR	3.0
1	B	171	PHE	2.9
1	B	414	PHE	2.7
1	A	203	ASN	2.7
1	B	207	TYR	2.7
1	B	161	TYR	2.7
1	B	201	THR	2.6
1	B	155	ALA	2.5
1	B	566	HIS	2.5
1	B	203	ASN	2.4
1	B	551	TYR	2.4
1	A	174	PHE	2.4
1	A	201	THR	2.4
1	B	550	LEU	2.3
1	B	202	SER	2.3
1	B	175	CYS	2.2
1	A	302	LEU	2.1
1	A	178	TYR	2.1
1	A	194	TYR	2.1
1	B	554	GLY	2.1
1	B	557	ASN	2.0
1	B	179	ILE	2.0
1	B	471	ASN	2.0

6.2 Non-standard residues in protein, DNA, RNA chains ⓘ

There are no non-standard protein/DNA/RNA residues in this entry.

6.3 Carbohydrates ⓘ

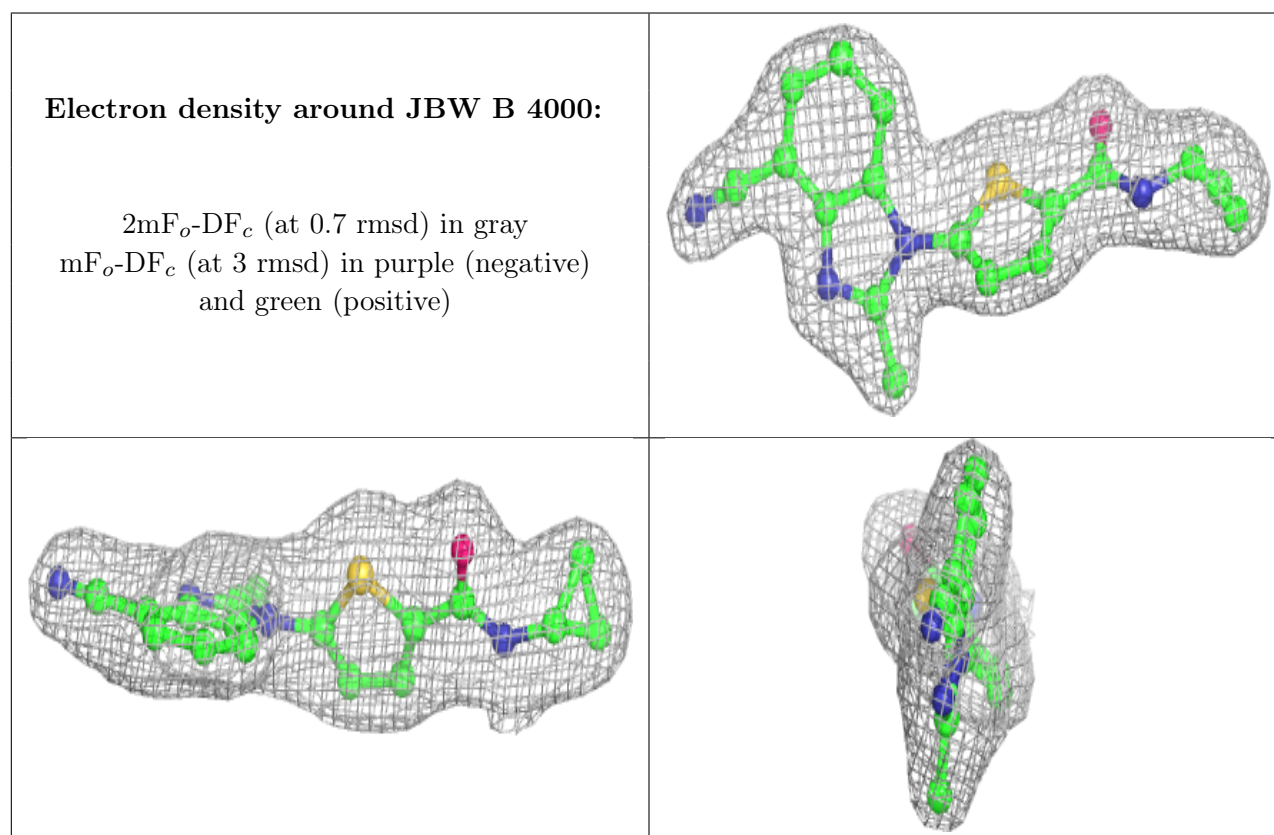
There are no monosaccharides in this entry.

6.4 Ligands ⓘ

In the following table, the Atoms column lists the number of modelled atoms in the group and the number defined in the chemical component dictionary. The B-factors column lists the minimum, median, 95th percentile and maximum values of B factors of atoms in the group. The column labelled 'Q<0.9' lists the number of atoms with occupancy less than 0.9.

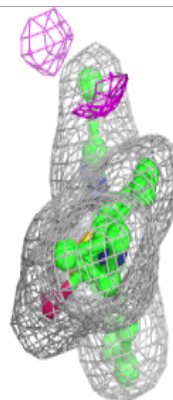
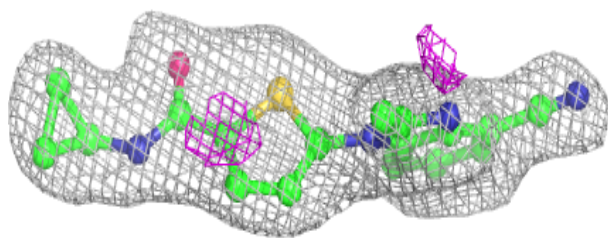
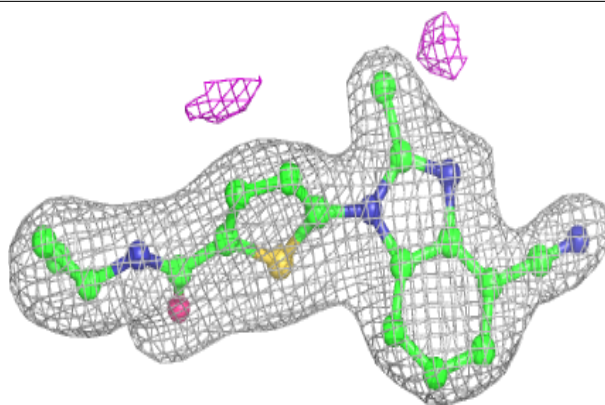
Mol	Type	Chain	Res	Atoms	RSCC	RSR	B-factors(\AA^2)	Q<0.9
4	JBW	B	4000	23/23	0.94	0.11	46,49,58,60	0
4	JBW	A	4000	23/23	0.95	0.12	41,44,55,58	0
3	ORO	B	900	11/11	0.95	0.10	38,42,47,47	0
2	FMN	A	800	31/31	0.98	0.12	28,32,35,36	0
2	FMN	B	800	31/31	0.98	0.10	33,38,40,41	0
3	ORO	A	900	11/11	0.98	0.10	30,34,37,37	0

The following is a graphical depiction of the model fit to experimental electron density of all instances of the Ligand of Interest. In addition, ligands with molecular weight > 250 and outliers as shown on the geometry validation Tables will also be included. Each fit is shown from different orientation to approximate a three-dimensional view.



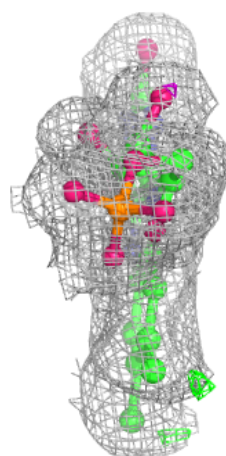
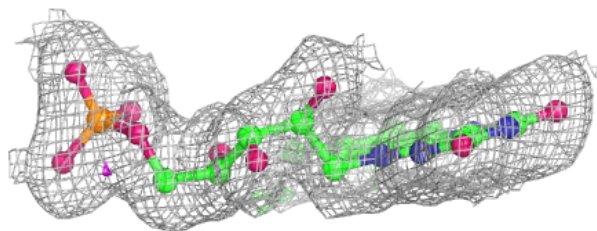
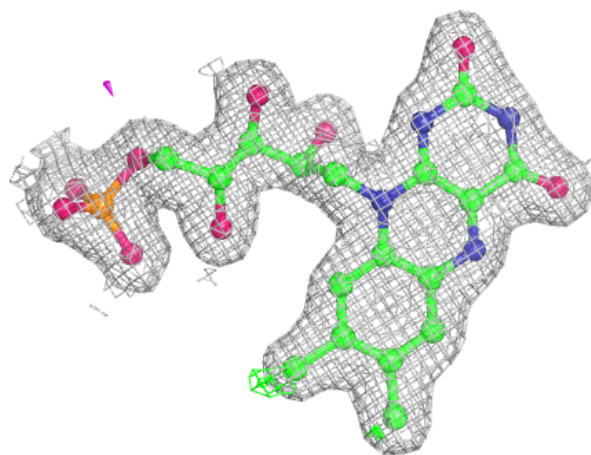
Electron density around JBW A 4000:

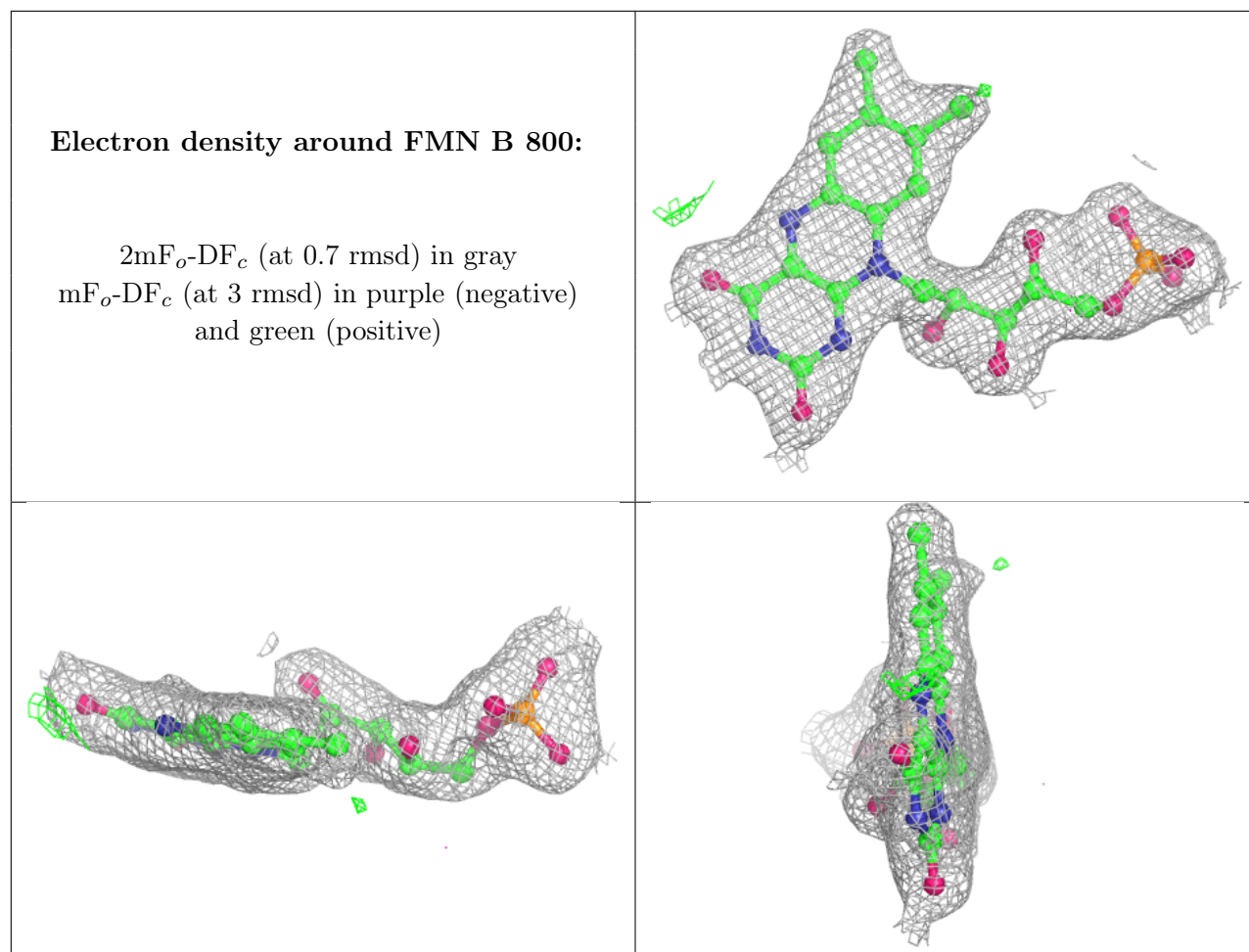
$2mF_o - DF_c$ (at 0.7 rmsd) in gray
 $mF_o - DF_c$ (at 3 rmsd) in purple (negative)
and green (positive)



Electron density around FMN A 800:

$2mF_o-DF_c$ (at 0.7 rmsd) in gray
 mF_o-DF_c (at 3 rmsd) in purple (negative)
and green (positive)





6.5 Other polymers [i](#)

There are no such residues in this entry.